

Angelcare®

FOR YOUR PEACE OF MIND

OWNER'S MANUAL

DIGITAL VIDEO, &
SOUND MONITOR

Model AC1320



**DON'T
FORGET**

IMPORTANT ADVICE FOR INITIAL SETUP



Cord Safety


Ensure the Nursery Unit is at least 1 metre away from your baby's cot.

PLEASE FOLLOW THE INSTRUCTIONS CAREFULLY FOR CORRECT SETUP

Please **DO NOT** return this product to the store. For assistance please contact our helpline on **0345 009 1789** or email helpline@babyhelpline.co.uk
Mon - Fri 10am - 4pm, excluding bank holidays.

TABLE OF CONTENTS

.....

 WARNINGS	3
AC1320 SETUP REQUIREMENTS.....	5
STEP 1 - Charging the Parent Unit (9 hours).....	5
STEP 2 - Setting up the Nursery Unit.....	6
STEP 3 - Turning on your monitor	7
STEP 4 - Testing and getting to know your monitor.....	7
STEP 5 - How to change and save additional functions	9
STEP 6 - Setting up additional cameras.....	13
Troubleshooting	15
Limited warranty.....	16
Technical specifications.....	16

OWNER'S MANUAL

KEEP YOUR OWNER'S MANUAL FOR FUTURE REFERENCE.

PLEASE READ THE WARNINGS AND INSTRUCTIONS CAREFULLY BEFORE ASSEMBLING & USING THE PRODUCT.

FAILURE TO FOLLOW THE WARNINGS AND THE INSTRUCTIONS COULD RESULT IN SERIOUS INJURY OR DEATH OR DAMAGES TO THE PRODUCT.

WARNING

Adult assembly required.
Keep small parts away from children when assembling.



This Angelcare Monitor is a Personal Care Product. Please DO NOT return this to the store where you purchased it from. If you have any questions or require assistance please call the Angelcare Helpline on 0345 009 1789 or email helpline@babyhelpline.co.uk.

The Baby Helpline is open Monday to Friday, 10am to 4pm. The helpline is closed on bank holidays.

For additional FAQs and to download instruction manuals visit; www.angelcare.co.uk.

To order spare parts for your Angelcare Baby Monitor visit; www.megababy.co.uk.

FCC AND IC REGULATIONS

.....

RF radiation exposure statement

The Nursery Unit complies with FCC RF radiation exposure limits set forth for an uncontrolled environment. **Caution:** To maintain the compliance with the FCC's and IC's RF exposure guideline, install the Nursery Unit at least 20 cm from ALL persons. The transmitter of this device must not be co-located or operating in conjunction with any other antenna or transmitter.

Industry Canada

This product meets the applicable Industry Canada technical specifications.
CAN ICES-3 (B)/NMB-3 (B)

⚠ WARNINGS

1. THIS PRODUCT CANNOT REPLACE RESPONSIBLE ADULT SUPERVISION. This product is designed to aid in the monitoring of your child. When using the monitor, you must still provide the supervision necessary for the continued safety of your child.

2. WARNING Strangulation Hazard — Children have STRANGLED in cords. Keep adapter cords out of the reach of children (more than 1 meter away).



3. Never use extension cords with adapters. ONLY use the adapters provided.

4. When an adapter is plugged into an electrical outlet, DO NOT touch the exposed end.

5. ALWAYS be sure that both the transmitter and receiver are working properly and are within range of each other. Test the monitor before first use, periodically and when changing location of the Nursery Unit.

6. DO NOT use monitor near water (such as bath tub, sink, etc.).



7. Keep monitor AWAY from heat sources (such as stoves, radiators, etc.).

8. This product is NOT a toy. DO NOT allow children to play with it.

9. This product contains small parts. Adult assembly required. Exercise care when unpacking and assembling the product and keep small parts away from children.

10. When using the monitor, the room temperature should be between 10°C and 40°C.

⚠ BATTERY WARNING

11. Use ONLY the enclosed lithium rechargeable battery that came with the Parent Unit. In the Nursery Unit, DO NOT mix old and new batteries. DO NOT mix alkaline, standard or rechargeable batteries. Insert batteries with correct polarity. DO NOT short-circuit supply terminals. ONLY use the recommended batteries or equivalent (volts and size) and the correct adapter. Remove batteries in the Nursery Unit when product is stored for long periods of time or when batteries are exhausted. Dispose exhausted batteries properly. Keep all batteries away from children.

12. IMPORTANT SAFETY INSTRUCTIONS

12.1 Heed all warnings - All warnings on the product and in the operating instructions should be adhered to.

12.2 Follow all instructions - All operating and use instructions should be followed.

12.3 Water and moisture - DO NOT use this apparatus near water. For example, near a bath tub, wash bowl, kitchen sink, laundry tub, in a wet environment or near a swimming pool and the like. Care should be taken so that objects DO NOT fall onto units and that liquids are not spilled into either unit through its openings.

12.4 Cleaning - Disconnect all units before cleaning. DO NOT immerse in water any part of the monitor. Clean only with dry cloth.

12.5 Ventilation - DO NOT block any ventilation openings. Allow for proper ventilation when units are in use. DO NOT cover the Nursery Unit or the Parent Unit with any object such as a blanket. DO NOT place it in a drawer or in any location which would muffle the sound or interfere with the normal flow of air.

12.6 Heat sources - DO NOT install near any heat sources such as radiators, heat registers, stoves, TVs or other apparatus (including amplifiers) that produce heat. Heat can damage the case or electrical parts.

12.7 Power cord protection - Protect the adapter's power cord from being walked on or pinched by furniture or other items - Power supply cords should be routed so that they are not likely to be walked on or pinched by items upon or against them, paying particular attention to cords and plugs, convenience receptacle, and the point where they exit from the product. The socket outlet shall be installed near the equipment and shall be easily accessible. Make sure to plug the adapter to the socket outlet nearest to the equipment and that is easily accessible. To disconnect from mains, unplug the adapter.

12.8 Accessories - Only use attachments/ accessories specified by the manufacturer. DO NOT place this product on an unstable cart, stand, tripod, bracket or table. The product may fall, causing serious injury to a child or adult and serious damage to the product. Use ONLY with a cart, stand, tripod, bracket or table recommended by the manufacturer or sold with the product. Any mounting of the product should follow the manufacturer's instructions.

12.9 Unplug this appliance during lightning storms or when not used for long periods of time.

12.10 Servicing - DO NOT attempt to service this product yourself as opening or removing covers (except battery door) may expose you to dangerous voltage or other hazards.

12.11 Replacement parts - When replacement parts are required, be sure the replacement parts specified by the manufacturer have the same characteristic as the original part. Unauthorized substitution may result in fire, electric shock or other hazards.

12.12 Usage - This baby monitor is intended as an aid. It is NOT a substitute for responsible and proper adult supervision and should not be used as such. Use this appliance ONLY for its intended use as described in this manual.

12.13 Power Sources - Operate this product only from the type of power source indicated on the type plate of the adaptor. If you are unsure of the type of power supply to your home, consult your dealer or local power company.

12.14 Overloading - DO NOT overload wall outlets, extension cords or integral convenience receptacles as this can result in a risk of fire or electric shock.

12.15 Object and Liquid Entry - NEVER push objects of any kind into this product through casing slots as they may touch dangerous voltage points or short out parts that could result in a risk of fire or electric shock. NEVER spill liquid of any kind on the product.

12.16 Antenna - The antenna used for this transmitter must be installed to provide a separation distance of at least 20 cm from all persons and must not be collocated or operating in conjunction with any other antenna or transmitter.

12.17 Power Lines - An outside antenna system should NOT be located in the vicinity of overhead power lines or other electric light or power circuit, or where it can fall into such power lines or circuits as contact with them may be fatal.

13. IMPORTANT SAFETY INSTRUCTIONS RELATED TO USE OF BATTERIES

13.1 Use ONLY the type and size of batteries specified in the owner's manual. There is a risk of explosion if batteries are replaced with an incorrect type.

13.2 Use ONLY the enclosed lithium rechargeable battery and/or the adapter provided for the Parent Unit. DO NOT attempt to replace the battery or you will severely damage the unit.

13.3 Charge the battery for 9 hours prior to first use. Be sure to have the monitor in the **OFF** position during this period. ONLY use the adapters included with your monitor.

13.4 DO NOT use these adapters with any other equipments.

13.5 When unplugging the adapter from the Nursery Unit, be sure it is switched to the **OFF** position. If it isn't, the unit will revert to battery mode if batteries are installed.

13.6 DO NOT use rechargeable batteries in the Nursery Unit. Use alkaline batteries ONLY.

13.7 DO NOT dispose batteries in fire. They may explode. Check with local regulations for possible special disposal instructions.

13.8 Exercise care in handling batteries in order not to short out the batteries with conducting materials such as rings, bracelets and keys. Overcharging, short circuiting, reverse charging, mutilation, or incineration of batteries must be avoided to prevent one or more of the following occurrences: release of toxic materials, release of hydrogen and/or oxygen, gas and rise in surface temperature.

13.9 DO NOT attempt to recharge batteries provided with or identified for use with this product that are not intended to be charged. The batteries may leak corrosive electrolyte or explode.

13.10 DO NOT attempt to rejuvenate the batteries provided with or identified for use with this product by heating them. Sudden release of battery electrolyte may occur, causing burns or irritation to eyes or skin.

13.11 If and when necessary, the batteries must be replaced with identical new ones or equivalent (volts and size). If a battery to be replaced is connected with other batteries in series, replace the other batteries at the same time as well. DO NOT mix old and new batteries.

13.12 Reverse polarity installation of the batteries in the end product must be avoided. Reverse insertion of batteries can cause charging, and that may result in leakage or explosion.

13.13 Remove batteries from the Nursery Unit if you store the product over 30 days because the batteries could leak and damage the product.

13.14 Discard 'dead' batteries as soon as possible since 'dead' batteries are more likely to leak in a product. If a battery has leaked or vented, it should be replaced immediately using protective gloves.

13.15 DO NOT store this product, or the batteries provided with or identified for use with this product, in high-temperature areas.

FCC WARNING

(North America Only)

14. Warning: Changes or modifications to this equipment not expressly approved by the party responsible for compliance could void the user's authority to operate the equipment.

14.1 NOTE: This equipment has been tested and found to comply with part 15 of the FCC Rules and the Industry Canada license-exempt RSS standard(s). These limits are designed to provide reasonable protection against harmful interference in a residential installation. This equipment generates, uses and can radiate radio frequency energy and, if not installed and used in accordance with the instructions, may cause harmful interference to radio communications.

14.2 However, there is no guarantee that interference will not occur in a particular installation. If this equipment does cause harmful interference to radio or television reception, which can be determined by turning the equipment **OFF** and **ON**, the user is encouraged to try to correct the interference by one or more of the following measures:

- Reorient or relocate the receiving antenna.
- Increase the separation between the equipment and receiver.
- Connect the equipment into an outlet on a circuit different from that to which the receiver is connected.
- Consult the dealer or an experienced radio/TV technician for help.

14.3 This device complies with the part 15 of the FCC Rules and the Industry Canada license - exempt RSS standards(s). Operation is subject to the following two conditions:

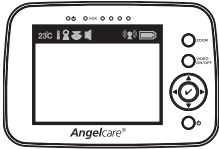
- (1)** This device may not cause harmful interference, and
- (2)** This device must accept any interference received, including interference that may cause undesired operation.

SETUP REQUIREMENTS

VIDEO & SOUND
MONITOR

Model AC1320

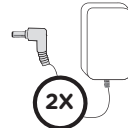
INCLUDED:



Rechargeable Parent Unit with enclosed lithium battery



Nursery Unit



2 AC Adapters

WHAT YOU WILL NEED (NOT INCLUDED):

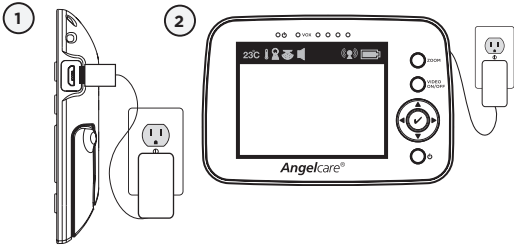


3 AA Alkaline
Batteries for Nursery Unit



Miniature Philips
Screwdriver

STEP 1 - CHARGING THE PARENT UNIT (9 HOURS)



- 1) Connect the adapter to the Parent Unit and into an electrical outlet.
- 2) Charge the unit for **9 continuous hours (prior to first use)**.

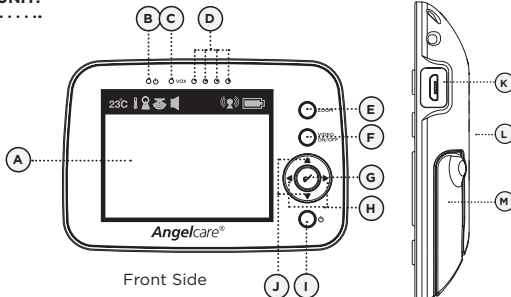
NOTE:

To optimize your battery performance please refer to Battery Guidelines in the Troubleshooting section.

IMPORTANT

The Parent Unit uses a non-removable rechargeable lithium battery. DO NOT attempt to change it.

PARENT UNIT:



Front Side

Right Side

- A) 3.5" LCD Screen
- B) Power **ON/OFF** Indicator
- C) VOX Indicator
- D) Sound Light Indicator
- E) Zoom button
- F) **VIDEO ON/OFF** button
- G) MENU/SELECT Button
- H) Brightness (+ or -)
- I) Power **ON/OFF**
- J) UP/DOWN Button / Volume Control
- K) Adapter Outlet
- L) Speaker (not shown)
- M) Stand

⚠ WARNING

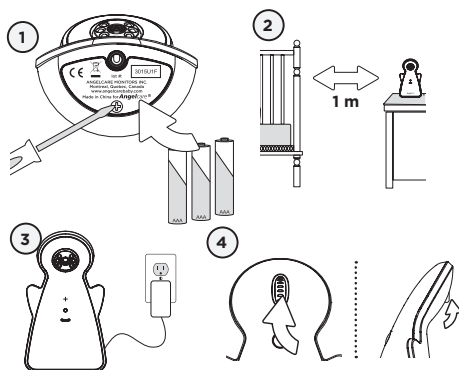


STRANGULATION HAZARD.

Children have STRANGLED in cords.

- Keep adapter cords out of the reach of children (more than 1 meter away).
- Because of the serious strangulation risk to infants and toddlers, parents and caregivers should never place the Nursery Unit within 1 meter of a crib.
- **NEVER** use extension cords with adapters. **ONLY** use the adapters provided. This product is not a toy. Never allow children to play with it.

STEP 2 - SETTING UP THE NURSERY UNIT

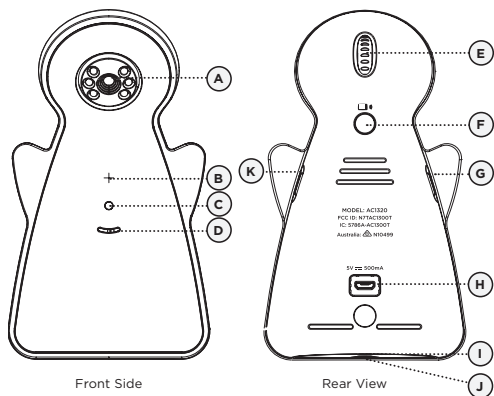


- 1) Remove the battery door and insert 3 AA Alkaline Batteries (not included).
- 2) Place the Nursery Unit at a **minimum of 1 meter** away from the crib.
- 3) Connect the adapter to the Nursery Unit and into an electrical outlet.
- 4) Direct the angle of the camera toward the crib using the rotating dial.

NOTE:

The batteries maintain power supply in case of power outage.

NURSERY UNIT:



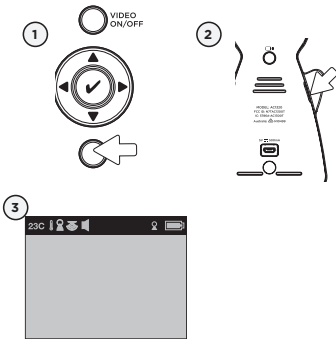
- A) Adjustable Camera
- B) Power ON Indicator
- C) Photo Sensor
- D) Microphone
- E) Rotating Dial for Camera Angle
- F) Pager button
- G) **POWER ON/OFF**
- H) Adapter Outlet
- I) Battery door (Not shown)
- J) Tripod Outlet*(Not shown)
- K) Night Light **ON/OFF**

* Nursery Unit may be installed on a tripod (not included).

IMPORTANT

Install the Nursery Unit on a flat, stable surface facing the crib at a distance of at least **1 meter**. Make sure to plug the adapter to the socket outlet nearest to the equipment and that is easily accessible.

STEP 3 - TURNING ON YOUR MONITOR



When Parent Unit is turned **ON** and Nursery Unit is **OFF**, Parent Unit will display **Disconnected** mode and will turn itself **OFF** after 60 seconds.

- 1) Press and hold the Parent Unit **ON/OFF** button for 2 seconds until LCD screen is turned **ON**. Angelcare's logo will be shown for 1 second.
- 2) Push and hold the Nursery Unit **Power ON/OFF** button for 2 seconds.
- 3) The Parent Unit will display **Video** mode screen.

If there is a lost connection between the 2 units after 15 seconds, the **Out-of-Range** alarm will turn **OFF** on the Parent Unit.

- The **Out-of-Range** icon will appear on the screen.
- The **Lost Connection** icon will appear on the indicator bar.

INDICATION BAR IMPORTANT ICONS



Temperature icon: Indicates room temperature.



Temperature Alarm icon: Indicates Temperature Alarm is active.



Nursery Unit icon: Indicates the Nursery Unit connected to the Parent Unit.



Night View Mode icon: Night View Mode.



Sound icon: Indicates that Sound function is active.

Connection icon: Indicates the connection quality between the Parent Unit and the Nursery Unit.



Good connection



Poor connection



Lost connection



Out-of-Range

Battery Level icon: Indicates battery level



Empty



1/3 Full

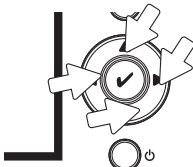


2/3 Full



Full

STEP 4 - HOW TO CHANGE FUNCTIONS ON YOUR MONITOR



The Angelcare® monitor can be used with the pre-program factory settings or you can also customize your settings to your preference. Main menu on the LCD display shows the different operation settings. Use the direction keys to change or check the different functions on the Parent Unit.

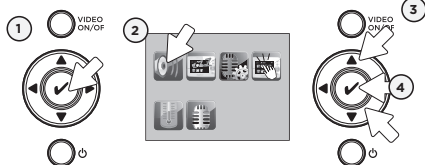
Press the **Menu/Select** button to select an icon. The icon will change from green to blue to show that the icon is selected. Press **Video ON/OFF** button to exit or to go back to main menu when in sub-menu.

IMPORTANT

When in menu or sub-menu modes, sound transmission between Parent and Nursery Units will be temporarily deactivated.

4.1 - SOUND

TO ACTIVATE SOUND:



- 1) Press **Menu/Select** button to access main menu.
- 2) Select the **Sound** icon and press **Menu/Select** button again.
- 3) Use the up and down arrows to **activate** or **deactivate** the sound.
- 4) Press **Menu/Select** button to confirm.

IMPORTANT

To avoid feedback (whistling), keep both units at least 3 meters apart.

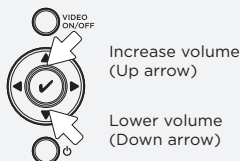
TO TEST THE SOUND:

Ask someone to speak into the Nursery Unit or place the unit near a radio to ensure that sound is being picked up.

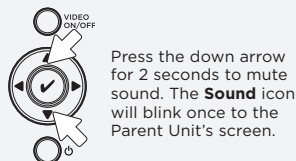
IF YOU HEAR NO SOUND: TO ACTIVATE SOUND:

- Ensure both units are **ON**.
- Check the sound has not been turned down on the Parent Unit. Increase volume on the Parent Unit.
- Check on the top bar of the Parent Unit to see if the monitor is on **"MUTE"** instead of **"ON"**.
- If there is no power to any unit, check or recharge batteries. Check both are working. Change electrical outlet if required.
- Bring Parent Unit closer to Nursery Unit.

ADJUST SOUND LEVEL



PUT IN SILENT/MUTE MODE



4.2 - BATTERIES

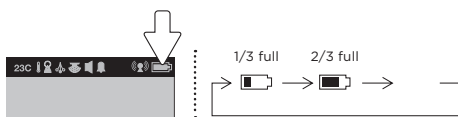
HOW TO CHECK THE BATTERIES:

Unplug the adapters from both units.

- If the green light on the Nursery Unit does not show, replace the batteries.
- If the Parent Unit and its screen do not light up, recharge the batteries.

HOW TO CHARGE THE BATTERIES IN THE PARENT UNIT:

Leave the Parent Unit plugged to fully charge the unit. Although the batteries at 1/3 capacity works normally, we recommend that you fully recharge them.



PARENT UNIT BATTERY ALARM

- Alarm activates when the batteries need to be recharged.
- Parent Unit will emit a beep sound every 15 seconds.
- **Empty Battery** icon will show on LCD screen.

IMPORTANT

- Test your monitor before first use.
- Test your monitor regularly to ensure it is functioning correctly.

YOU ARE NOW READY TO USE YOUR MONITOR

The Angelcare® monitor can be used with the pre-program factory settings or you can also customise your settings to your preference.

DEFAULT SETTINGS



Sound Mode: ON
Speaker Volume: Level 3 (of 6)



Key Tone: ON



Screen Saver Timer: ON
(after 3 minutes)



Temperature Unit: Celsius
Temperature Alarm: OFF



VOX: OFF
VOX Level: Level 2 (of 4)



LCD Brightness: Level 3 (of 5)



STEP 5 - HOW TO CHANGE AND SAVE ADDITIONAL FUNCTIONS

5.1 - VOICE ACTIVATION (VOX) OR CONTINUOUS SOUND MODE

Allows you to select your option on how you monitor sound:

VOX (voice activation picks up sound based on the setting of the sensitivity level) This means that it will transmit sounds only when it detects them. It will detect even the softest levels of crying. To save power, after 10 seconds, the sound transmission will stop if no sound is detected. Once sound is detected transmission will automatically activate

Continuous (sound monitoring is continuously on, picking up all sounds).

TO ACTIVATE VOX MODE:

NOTE:

By deactivating **VOX** the Continuous setting is **ON**.

- 1) Press **Menu** icon to access the main menu.
- 2) Select the **VOX** icon to **activate** or **deactivate** the VOX function.
- 3) Press **Menu/Select** button to confirm.



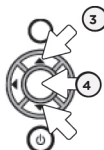
ON
VOX ON
(VOX)



OFF
VOX OFF
(Continuous)

TO ADJUST THE SOUND SENSITIVITY (VOX):

Allows you to determine the sound level needed to trigger sound transmission to the Parent Unit. This means that sound will only transmit based on the level that you set.



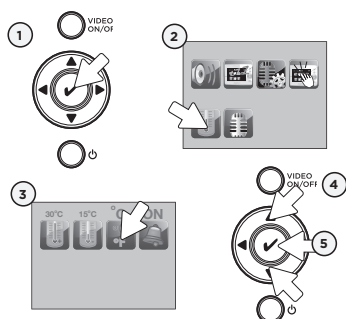
- 1) Press **Menu/Select** button to access the main menu.
- 2) Select the **VOX Sensitivity** icon.
- 3) Use the up and down arrows to choose the desired sensitivity level (1 to 4)





- 4) Press **Menu/Select** button to confirm.

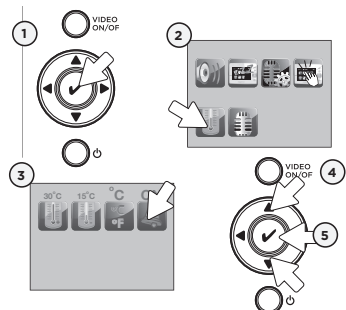
5.2 - THERMOMETER


TO CHANGE THE MEASUREMENT UNIT:



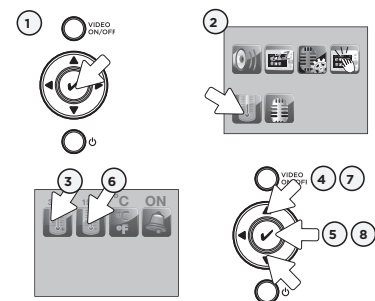
- 1) Press **Menu/Select** button to access main menu.
 - 2) Select the **Temperature** icon to access sub-menu.
 - 3) Select the **°C °F** icon.
 - 4) Use the up and down arrows to change from **Celsius** to **Fahrenheit**.
-
-  Celsius  Fahrenheit
- 5) Press **Menu/Select** button to confirm.

TO ACTIVATE THE TEMPERATURE ALARM:



- 1) Press **Menu/Select** button to access main menu.
 - 2) Select the **Temperature** icon to access sub-menu.
 - 3) Select the **Temperature Alarm** icon.
 - 4) Use the up and down arrows to **activate** or **deactivate** the **Temperature Alarm**.
-
-  **Temperature Alarm icon:** Indicates temperature alarm is **ACTIVATED**.
- 5) Press **Menu/Select** button to confirm.

TO SET THE TEMPERATURE RANGE:



.....

The range between the minimum and maximum temperature must be at least 4 °C/7 °F. An error tone will be heard if you try to set it up below this minimum level.

- 1) Press **Menu/Select** button to access main menu.
- 2) Select the **Temperature** icon to access sub-menu.
- 3) Select the **High Temperature** icon to set **maximum** temperature range (15 to 32 °Celsius/59 to 90 ° Fahrenheit).
- 4) Use the up and down arrows to set the highest temperature preferred.
- 5) Press **Menu/Select** button to confirm.
- 6) Select the **Low Temperature** icon to set **minimum** temperature range (5 to 20 °Celsius/41 to 68 ° Fahrenheit).
- 7) Use the up and down arrows to set the lowest temperature preferred.
- 8) Press **Menu/Select** button to confirm.

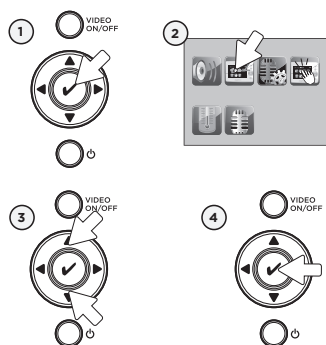


TEMPERATURE ALARM

- Alarm activates when temperature reaches maximum or minimum set temperature.
- Parent Unit will emit 4 consecutive beeps, every 5 seconds.
- **Temperature Alarm** icon will show on LCD screen.

5.3 - SCREEN SAVER

Allows you to set the screen saver starting point.



MANUAL SETTING:

To trigger manually the **Screen Saver** mode press and hold the Parent Unit **Video ON/OFF** button.

- 1) Press **Menu/Select** button to access main menu.
- 2) Select the **Screen Saver** icon.
- 3) Use the up and down arrows to select the delay before **Video** mode turns into **Screen Saver** mode (**OFF**, 30 seconds up to 3 minutes).
- 4) Press **Menu/Select** button to confirm.

NOTE:

A black screen will appear when video is on **Screen Saver** mode. Press any button to return to **Video** mode.

5.4 - INFRARED NIGHT VISION

Allows you to capture image when lighting is insufficient.



A **Night View** icon will appear at the top of the Parent Unit screen.



The **Night View** icon will disappear at the top of the Parent Unit screen.

- 1) The infrared LEDs will turn **ON** automatically when the lighting is not sufficient, to give a night view on LCD display.

NOTE:

When the **Infrared Night Vision** is **ON**, only black and white image will be displayed on the LCD screen.

- 2) If the light is bright enough in the room, the infrared LED on the Nursery Unit will turn **OFF** automatically.

5.5 - NIGHT LIGHT

Allows you to use your monitor as a night light.

TO ACTIVATE THE LIGHT:

Push the button on the back of the right "wing" to turn the **Night Light ON** or **OFF**.



5.6 - PAGER

Allows you to locate the Parent Unit.

TO LOCATE PARENT UNIT:

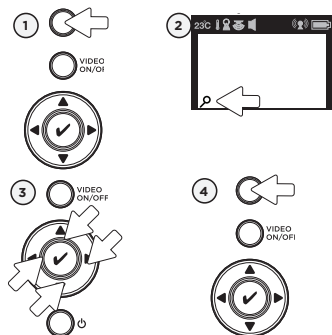
Press the **Pager** button for no more than 2 seconds. The Parent Unit will emit a paging sound for one minute.

To deactivate the **Pager** function, push the **Pager** button again.



5.7 - ZOOM MODE

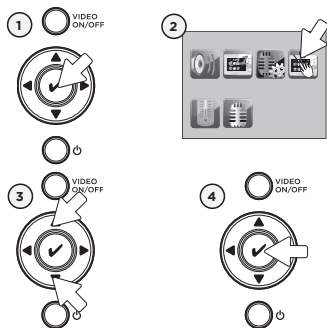
Allows you to zoom in to twice the normal view.



- 1) Press the **Zoom** button on the Parent Unit.
- 2) The **Zoom** icon will appear at the bottom left corner of the screen.
- 3) Use the **arrow keys** to zoom in on what you want to see more closely.
- 4) Press the **Zoom** button on the Parent Unit again to return to normal view.

5.8 - KEY TONE

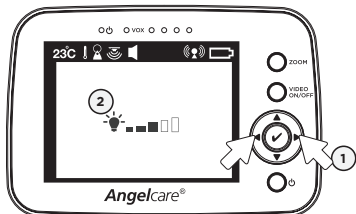
Allows you to activate or deactivate key tone sound.



- 1) Press **Menu/Select** button to access main menu.
- 2) Select the **Key Tone** icon.
- 3) Use the up and down arrows to **activate** or **deactivate Key Tone** sound.
- 4) Press **Menu/Select** button to confirm.

5.9 - LCD SCREEN BRIGHTNESS

Allows you to adjust the LCD screen brightness on the Parent Unit.



- 1) Use the left and right arrows to adjust the screen brightness level (**1** to **5**).
- 2) A **Light Bulb** icon will be shown on the LCD screen.

STEP 6 - SETTING UP ADDITIONAL CAMERAS

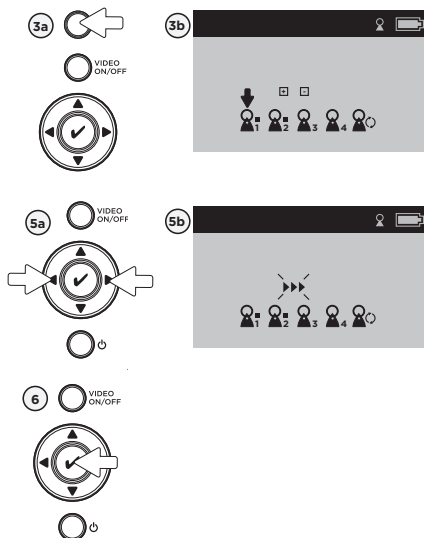
The Parent Unit can support up to four Nursery Units. When the Parent Unit is **ON**, individual Nursery Unit icon will be shown on the top bar of the Parent Unit screen.

6.1 - HOW TO SET UP ADDITIONAL CAMERAS

The number on the side of the **Nursery Unit** icon will only appear when more than one Nursery Units are connected to the Parent Unit.

The little black square shows the Nursery Units already registered. Press **Video ON/OFF** button to go back to the main screen at any time.

Before starting to set up additional cameras, make sure to turn **OFF** and to bring closer together the units.



1) Switch Parent Unit & ALL Nursery Unit's **OFF**.

2) Switch on Parent Unit to display black screen.

3a & 3b) Press & Hold "**ZOOM**" button to display viewing **MENU**.

4) Switch **ON** Nursery Unit & quickly press and release **ON/OFF** switch 4 times until night light flashes.

5a & 5b) Whilst night light is still flashing, use left and right arrows to select Nursery Unit you want to add - using numbers 2 - 4 only.

6) Press **Menu/Select** button to confirm selection. The Nursery Unit will connect to the Parent Unit and video transmission is displayed on the screen.

*Please repeat steps 1 - 6 until you have added up to 4 Nursery Units.

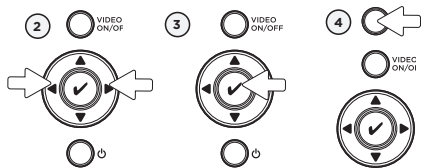
NOTE:

If the Parent Unit does not show **Video** mode, the Nursery Unit has not been registered successfully. If there is no action within 30 seconds, the Parent Unit's screen will go back to the previous screen.

6.2 - SELECTING INDIVIDUAL NURSERY UNIT VIEW



1) Press and hold the **Zoom** button, for more than 2 seconds, to enter **View** mode.



- 2) Use the left and right arrows to select the Nursery Unit display you want to see. (1 to 4).
- 3) Press the **Menu/Select** button to confirm your selection.
- 4) Press the **Zoom** button on the Parent Unit again to return to normal view.

NOTE:

When a new Nursery Unit view is selected, the temperature reading and the sound transmission will be detected from this unit.

6.3 - VIEWING ALL CAMERA VIEWS IN SLIDESHOW

Allows you to display each camera view in sequence as an automatic slideshow.



- 1) Press and hold the **Zoom** button, for more than 2 seconds, to enter **View** mode.
- 2) Using the left and right arrows, select the **Nursery Unit** icon on the far right to enter automatic slideshow of all Nursery Units' camera views set up.
- 3) Press the **Menu/Select** button to confirm your selection.

Each camera view that is set up will be displayed in sequence for 10 seconds on the Parent Unit screen.

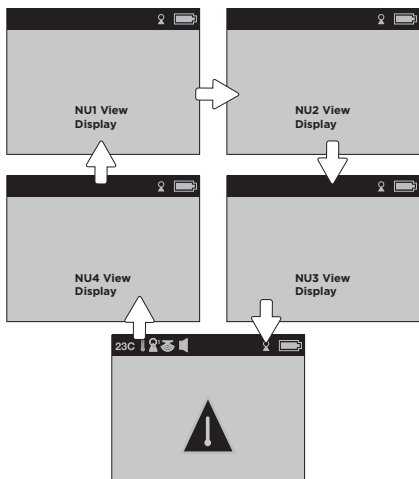
NOTE:

In **Scan** mode, if the Parent Unit is too far from the Nursery Unit and the connections is lost, the LCD screen will display the last Nursery Unit view and the **Out-of-Range** icon will appear on the Parent Unit's screen.

Bring the Parent and the Nursery Unit closer together.

OR

Press and hold the **Zoom** button to select another Nursery Unit.



The LCD screen will be connected to the default Nursery Unit, unless:

- 1) **Temperature alarm** is **OFF**.
- 2) The temperature is already adjusted.

To set up another Nursery Unit, refer to **SELECTING INDIVIDUAL NURSERY UNIT VIEW MODE**.



TEMPERATURE ALARM

If the **Temperature alarm** is **ON** and a Nursery Unit detects a temperature alarm, the **Temperature alarm** icon will appear on the screen.

TROUBLESHOOTING

TAKING CARE OF YOUR RECHARGEABLE BATTERIES

.....

- Ensure that you fully charge your batteries for 9 hours before their first use.
- To maintain maximum battery life it is recommended that you fully discharge your batteries periodically. If your Parent Unit is not in use, please turn it **OFF**.

NO SOUND IS BEING TRANSMITTED

.....

- Ensure both units are **ON**.
- Check the sound has not been turned down on the Parent Unit. Increase volume on the Parent Unit. Refer to **Step 4.1**.
- Check on the top bar of the Parent Unit to see if the monitor is on "**MUTE**" instead of "**ON**". Refer to **Step 4.1**.
- If there is no power to any unit, check or recharge batteries. Check both are working. Change electrical outlet if required.
- Bring Parent Unit closer to Nursery Unit.

NURSERY UNIT POWER ON INDICATOR (GREEN LIGHT) DOES NOT LIGHT UP

.....

- Check connections or change to another electrical outlet.
- Push and hold the button on the back of the **left 'wing'** for 2 seconds to turn the Nursery Unit **ON**.

WEAK RECEPTION

.....

- Bring units closer together.
- Change the position of one or both units.
- Place units on a flat surface away from baby's reach.
- Recharge the Parent Unit.

STATIC, DISTORTION, INTERFERENCES (FROM OTHER MONITORS, WIRELESS PHONES, WALKIE-TALKIES, ETC.)

.....

- Rotate Parent Unit or move it away from source of interference.

FEEDBACK (LOUD NOISES EMITTED FROM THE PARENT UNIT)

.....

- Move units farther apart (at least 3 meters).
- Decrease volume on Parent Unit.

THE PARENT UNIT SCREEN IS BLACK (PARENT UNIT IS OFF)

.....

- Turn the Parent Unit back **ON** by pushing and holding the **POWER ON/OFF** button for 2 seconds.
- Recharge the Parent Unit.

LIMITED WARRANTY

Angelcare® warrants to the original owner of this product that Angelcare® video and sound monitor (model AC1320) is free from any material and workmanship defects, for a period of one (1) year from the date of the original purchase. If this monitoring system fails to function properly when used as directed under normal conditions within the one year period, Angelcare® will either repair or replace the product, at our discretion, free of charge. Please contact your distributor.

The product must be accompanied by a proof of purchase, either a bill of sale or other proof that the monitoring system is within the warranty period. Angelcare® will bear the cost of repairing or replacing the product and shipping it back to you.

This warranty does not apply to a product which has been damaged as a result of improper maintenance, an accident, improper voltage supply or any other form of misuse. The warranty is also void if the owner repairs or modifies the product in any way. Angelcare® is not liable for any incidental or consequential damages with regard to this product. The warranty also excludes any liability other than what is stated above. No other warranty is given.

This warranty does not cover products and accessories which are not Angelcare-branded, or any problems that result from usage that is not in accordance with product instructions, failure to follow the product instructions, or problems caused by using accessories, parts or components not supplied by Angelcare.

LEGAL RIGHTS VARY FROM COUNTRY TO COUNTRY. SOME COUNTRIES DO NOT ALLOW THE EXCLUSION OR LIMITATION OF INCIDENTAL OR CONSEQUENTIAL DAMAGES, SO THE ABOVE LIMITATIONS MAY NOT APPLY TO YOU.

WE ARE NOT IN ANY WAY RESPONSIBLE FOR ANY OUTCOME RESULTING FROM THE USE OF THIS PRODUCT.

IMPORTANT! This Angelcare® monitor is a personal care product. Please do not return this product to the store. If you have questions or need help, please call your distributor before returning this product.

TECHNICAL SPECIFICATIONS

Range:

Open field (Open area without obstructions): up to 250 meters.

Number of Channels:

USA/Canada: 19 channels.
Europe: 64 channels.

Power Supply:

3 AA alkaline batteries (not included) or 100-240VAC/5VDC adapter for Nursery Unit.

1 enclosed and non-detachable rechargeable Li-ion polymer battery and 100-240VAC/5VDC adapter for the Parent Unit.

Caution: To reduce the risk of electric shock, do not expose this product to rain or moisture.

Danger of explosion if batteries are incorrectly replaced. The included battery is an enclosed and non-detachable Li-ion polymer rechargeable battery, manufactured by SPRINGPOWER TECHNOLOGY (SHENZHEN) COMPANY LIMITED.

The lithium rechargeable battery can NOT be replaced.

Batteries:

- DO NOT mix old and new batteries.
- DO NOT mix alkaline standard (carbon-zinc), or rechargeable (NI-CD, NIMH, etc.) batteries.

Transmission:

Data transmission between the Parent Unit and the Nursery Unit is made on the 2.4GHz frequency.

Hereby, Angelcare Monitors Inc., declares this baby monitor is in compliance with the essential requirements and other relevant provisions of Directive 1999/5/EC.

The EU declaration of conformity can be obtained at: www.angelcarebaby.com.



PROTECT THE ENVIRONMENT

This electronic equipment contains reusable material and must not be disposed with domestic waste. Please take it to a collecting point for electric and electronic equipment (ask your local authorities for details).

ErP COMPLIANCE

SOUTH AFRICA-BRAZIL-ECUADOR-EUROPEAN UNION-UK
USE ONLY ANGELCARE® BRAND POWER SUPPLY - MODEL NUMBER: T05005V001 / T05005B001

GERMANY
USE ONLY ANGELCARE® BRAND POWER SUPPLY - MODEL NUMBER: T05005F002

AUSTRALIA
USE ONLY ANGELCARE® BRAND POWER SUPPLY - MODEL NUMBER: T05005S002

NORTH AMERICA
USE ONLY ANGELCARE® BRAND POWER SUPPLY - MODEL NUMBER: T05005U002

This Angelcare Baby Monitor is a Personal Care Product. **Please DO NOT return this to the store**, but contact us initially for advice and assistance:

Angelcare Helpline on **0345 009 1789**

Website: www.angelcare.co.uk

Email: helpline@babyhelpline.co.uk

NOTE: Helpline is open Monday to Friday, 10am to 4pm, excluding bank holidays.

