

Angelcare®

FOR YOUR PEACE OF MIND

OWNER'S MANUAL

Model AC310

Baby Video and Sound Monitor

Model AC315

Baby Video, Sound and Movement Monitor



DON'T FORGET

IMPORTANT ADVICE FOR INITIAL SETUP



Movement Alarm

Your monitor comes with the movement alarm activated. When switching on your monitor it will alarm, with or without the Sensor Pad plugged in, if no movement is detected. Deactivate the movement function to use the monitor without the Sensor Pad.




Cord Safety

Ensure the Nursery Unit is at least 1 metre away from your baby's cot. The Sensor Pad cord must always be kept out of reach of baby and secured using the cord cover kit provided.

PLEASE FOLLOW THE INSTRUCTIONS CAREFULLY FOR CORRECT SETUP

Please **DO NOT** return this product to the store. For assistance please contact our helpline on **0345 009 1789** or email helpline@babyhelpline.co.uk
Mon - Fri 10am - 4pm, excluding bank holidays.

TABLE OF CONTENTS

 WARNINGS	3
Setup requirements.....	5
Charging the Parent Unit (9 hours).....	6
Positioning the Movement Sensor.....	8
Setting up the Camera.....	11
Getting to know your Monitor.....	13
Activating and deactivating additional functions.....	17
Adding accessories.....	26
Troubleshooting.....	28
Limited warranty.....	29
Technical specifications.....	29

OWNER'S MANUAL

KEEP YOUR OWNER'S MANUAL FOR FUTURE REFERENCE.

PLEASE READ THE WARNINGS AND INSTRUCTIONS CAREFULLY BEFORE ASSEMBLING & USING THE PRODUCT.

FAILURE TO FOLLOW THE WARNINGS AND THE INSTRUCTIONS COULD RESULT IN SERIOUS INJURY OR DEATH OR DAMAGES TO THE PRODUCT.

THE SENSOR PAD FEATURE IS NOT FOR USE WITH ADULTS, CHILDREN OR INFANTS OLDER THAN 24 MONTHS.

THE SENSOR PAD IS NOT INTENDED TO BE USED TO DETERMINE IF A CHILD IS OUT OF THE CRIB.

WARNING

Adult assembly required.
Keep small parts away from children when assembling.

We, at Angelcare®, stand behind all of our products.
If you are not completely satisfied or have any questions,
United States and Canada: Please contact us at: angelcare@cdecinc.ca
Other countries: Please contact your local distributor.

FCC AND IC REGULATIONS

RF radiation exposure statement

The Camera complies with FCC RF radiation exposure limits set forth for an uncontrolled environment.
Caution: To maintain the compliance with the FCC's and Industry Canada's RF exposure guideline, install the Camera at least 20 cm from ALL persons. The transmitter of this device must not be co-located or operating in conjunction with any other antenna or transmitter.

Industry Canada

This product meets the applicable Industry Canada technical specifications.
CAN ICES-3 (B)/NMB-3 (B)

⚠ WARNINGS

1. THIS PRODUCT CANNOT REPLACE RESPONSIBLE ADULT SUPERVISION. This product is designed to aid in the monitoring of your child. When using the monitor, you must still provide the supervision necessary for the continued safety of your child. Monitoring of premature babies, or those considered to be at risk, should always be carried out under the supervision of a health professional. This monitor **SHOULD NOT** be used as a medical device, nor as a device to prevent Sudden Infant Death Syndrome (SIDS).

2. WARNING Strangulation Hazard — Children have **STRANGLER** in cords. Keep adapter cords out of the reach of children (more than 1 meter away). **NEVER** use Sensor Pad(s) without the protective cord covering. Check protective cord covering before each use. Immediately discontinue use of Sensor Pad(s) if protective covering is



damaged or broken.

3. Never use extension cords with adapters. ONLY use the adapters provided.

4. When an adapter is plugged into an electrical outlet, DO NOT touch the exposed end.

5. ALWAYS be sure that both the transmitter and receiver are working properly and are within range of each other. Test the monitor before first use, periodically and when changing location of the Camera.

6. ALWAYS be sure to immediately check on baby whenever an alarm sounds.

7. DO NOT use monitor near water (such as bath tub, sink, etc.).



8. Keep monitor AWAY from heat sources (such as stoves, radiators, etc.).

9. ALWAYS place both the Camera and the Parent Unit on a flat surface in an upright position and allow for proper ventilation. **DO NOT** place on sofas, cushions, beds, etc. which may block ventilation.

10. This monitor uses public airwaves to transmit signals. The Parent Unit may pick up signals or interference from other nursery monitors in your area. Your monitor may even be picked up by other households. To protect your privacy, make sure both units are turned **OFF** when not in use. If you experience interference, change the channel on both units.

11. This product is **NOT** a toy. **DO NOT** allow children to play with it.

12. This product contains small parts. Adult assembly required. Exercise care when unpacking and assembling the product and keep small parts away from children.

13. When using the monitor, the room temperature should be between 10°C and 40°C.

⚠ BATTERY WARNING

14. The Parent Unit battery is a replaceable Li-Ion battery. Only use the Angelcare recommended replacement battery. Danger of explosion if the wrong battery is used or if replaced incorrectly. Refer to your user manual for correct battery installation. **DO NOT** short circuit supply terminals. Only use the Angelcare provided power adapter to charge the battery. Remove the battery from your Parent Unit if product is to be stored for an extended period of time. Dispose of batteries according to your local ordinances. **ALWAYS** keep all batteries away from children.

15. IMPORTANT SAFETY INSTRUCTIONS

15.1 Heed all warnings – All warnings on the product and in the operating instructions should be adhered to.

15.2 Follow all instructions – All operating and use instructions should be followed.

15.3 Water and moisture - **DO NOT** use this apparatus near water. For example, near a bath tub, wash bowl, kitchen sink, laundry tub, in a wet environment or near a swimming pool and the like. Care should be taken so that objects **DO NOT** fall onto units and that liquids are not spilled into either unit or Sensor Pad through its openings.

15.4 Cleaning - Disconnect all units before cleaning. **DO NOT** immerse in water any part of the monitor. Clean only with dry cloth.

15.5 Ventilation - **DO NOT** block any ventilation openings. Allow for proper ventilation when units are in use. **DO NOT** cover the Camera or the Parent Unit with any object such as a blanket. **DO NOT** place it in a drawer or in any location which would muffle the sound or interfere with the normal flow of air.

15.6 Heat sources - **DO NOT** install near any heat sources such as radiators, heat registers, stoves, TVs or other apparatus (including amplifiers) that produce heat. Heat can damage the case or electrical parts.

15.7 Power cord protection - Protect the Sensor Pad cord and Adapter's power cord from being walked on or pinched by furniture or other items – Power supply cords should be routed so that they are not likely to be walked on or pinched by items upon or against them, paying particular attention to cords and plugs, convenience receptacle, and the point where they exit from the product. The socket outlet shall be installed near the equipment and shall be easily accessible. Make sure to plug the adapter to the socket outlet nearest to the equipment and that is easily accessible. To disconnect from mains, unplug the adapter.

15.8 Accessories - Only use attachments/accessories specified by the manufacturer. DO NOT place this product on an unstable cart, stand, tripod, bracket or table. The product may fall, causing serious injury to a child or adult and serious damage to the product. Use ONLY with a cart, stand, tripod, bracket or table recommended by the manufacturer or sold with the product. Any mounting of the product should follow the manufacturer's instructions.

15.9 Unplug this appliance during lightning storms or when not used for long periods of time.

15.10 Servicing - DO NOT attempt to service this product yourself as opening or removing covers (except battery door) may expose you to dangerous voltage or other hazards.

15.11 Replacement parts - When replacement parts are required, be sure the replacement parts specified by the manufacturer have the same characteristic as the original part. Unauthorized substitution may result in fire, electric shock or other hazards.

15.12 Usage - This baby monitor is intended as an aid. It is NOT a substitute for responsible and proper adult supervision and should not be used as such. Use this appliance ONLY for its intended use as described in this manual.

15.13 Power Sources - Operate this product only from the type of power source indicated on the type plate of the adaptor. If you are unsure of the type of power supply to your home, consult your dealer or local power company.

15.14 Overloading - DO NOT overload wall outlets, extension cords or integral convenience receptacles as this can result in a risk of fire or electric shock.

15.15 Object and Liquid Entry - NEVER push objects of any kind into this product through casing slots as they may touch dangerous voltage points or short out parts that could result in a risk of fire or electric shock. NEVER spill liquid of any kind on the product.

15.16 Antenna - The antenna used for this transmitter must be installed to provide a separation distance of at least 20 cm from all persons and must not be collocated or operating in conjunction with any other antenna or transmitter.

15.17 Power Lines - An outside antenna system should NOT be located in the vicinity of overhead power lines or other electric light or power circuit, or where it can fall into such power lines or circuits as contact with them may be fatal.

15.18 Vibration Source - When the monitor is in use, DO NOT use a crib mobile or other crib accessories that may produce vibrations. Other sources of vibrations may include fans, washing machines, loud music, etc. These sources of vibration may interfere with the performance of your Angelcare® monitor and the alarm will not sound if it continues to detect any movement other than your baby's. Be sure all vibration sources are eliminated before using the monitor. You may experience false alarms for several reasons. The most common reason is the Camera has not been turned **OFF** after you have removed your baby from the crib. Another reason is the Sensor Pad has not been placed under the mattress properly. Be sure the Sensor Pad is on a flat, firm surface

with the printed side facing up. The sensitivity level may also need to be adjusted. Refer to **Step 5.1**. Always be sure to immediately check on baby whenever an alarm sounds.

15.19 Sensor Pad - Your Sensor Pad can be used in any crib that is stationary. If the crib has a spring or slat base, place a hard board between the crib base and the Sensor Pad measuring at least 33 x 33 cm and 6 mm thick. Only use your Angelcare® monitor in a stationary sleeping environment such as a crib where the Sensor Pad can rest on a completely flat, firm surface. The Sensor Pad is made of plastic and does not permit the air to circulate. Therefore, mildew build up could develop underneath the mattress in the Sensor Pad area. We suggest rotating the mattress regularly to prevent any mildew.

16. IMPORTANT SAFETY INSTRUCTIONS RELATED TO USE OF BATTERIES

16.1 Use ONLY the type and size of batteries specified in the owner's manual. There is a risk of explosion if batteries are replaced with an incorrect type.

16.2 Charge the battery for 9 hours prior to first use. Be sure to have the monitor in the **OFF** position during this period. ONLY use the adapters included with your monitor.

16.3 DO NOT use these adapters with any other equipments.

16.4 When unplugging the adapter from the Camera, be sure it is switched to the **OFF** position. If it isn't, the unit will revert to battery mode if batteries are installed.

16.5 DO NOT use rechargeable batteries in the Camera. Use alkaline batteries ONLY.

16.6 DO NOT dispose batteries in fire. They may explode. Check with local regulations for possible special disposal instructions.

16.7 Exercise care in handling batteries in order not to short out the batteries with conducting materials such as rings, bracelets and keys. Overcharging, short circuiting, reverse charging, mutilation, or incineration of batteries must be avoided to prevent one or more of the following occurrences: release of toxic materials, release of hydrogen and/or oxygen, gas and rise in surface temperature.

16.8 DO NOT attempt to recharge batteries provided with or identified for use with this product that are not intended to be charged. The batteries may leak corrosive electrolyte or explode.

16.9 DO NOT attempt to rejuvenate the batteries provided with or identified for use with this product by heating them. Sudden release of battery electrolyte may occur, causing burns or irritation to eyes or skin.

16.10 If and when necessary, the batteries must be replaced with identical new ones or equivalent (volts and size). If a battery to be replaced is connected with other batteries in series, replace the other batteries at the same time as well. DO NOT mix old and new batteries.

16.11 Reverse polarity installation of the batteries in the end product must be avoided. Reverse

insertion of batteries can cause charging, and that may result in leakage or explosion.

16.12 Remove batteries from both units if you store the product over 30 days because the batteries could leak and damage the product.

16.13 Discard 'dead' batteries as soon as possible since 'dead' batteries are more likely to leak in a product. If a battery has leaked or vented, it should be replaced immediately using protective gloves.

16.14 DO NOT store this product, or the batteries provided with or identified for use with this product, in high-temperature areas.

FC WARNING

17.1 Warning: Changes or modifications to this equipment not expressly approved by the party responsible for compliance could void the user's authority to operate the equipment.

17.2 NOTE: This equipment has been tested and found to comply with part 15 of the FCC Rules and the Industry Canada license-exempt RSS standard(s). These limits are designed to provide reasonable protection against harmful interference in a residential installation. This equipment generates, uses and can radiate radio frequency energy and, if not installed and used in accordance with the instructions, may cause harmful interference to radio communications.

17.3 However, there is no guarantee that interference will not occur in a particular installation. If this equipment does cause harmful interference to radio or television reception, which can be determined by turning the equipment **OFF** and **ON**, the user is encouraged to try to correct the interference by one or more of the following measures:

- Reorient or relocate the receiving antenna.
- Increase the separation between the equipment and receiver.
- Connect the equipment into an outlet on a circuit different from that to which the receiver is connected.
- Consult the dealer or an experienced radio/TV technician for help.

17.4 This device complies with the part 15 of the FCC Rules and the Industry Canada license - exempt RSS standards(s). Operation is subject to the following two conditions:

17.5 (1) This device may not cause harmful interference, and

17.6 (2) This device must accept any interference received, including interference that may cause undesired operation.

SETUP REQUIREMENTS

INCLUDED:

Model AC310

Baby Video and Sound Monitor

Model AC315

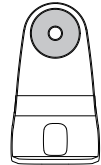
Baby Video, Sound and Movement Monitor



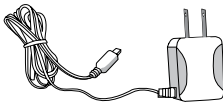
Touch control Parent Unit



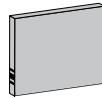
Camera



Tabletop stand
(for camera)



AC adapter
(for Parent Unit)



Lithium ion battery pack
(for Parent Unit)



AC adapter
(for camera)

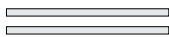
INCLUDED (CONTINUED):



Wall mount
(for camera)
with hardware



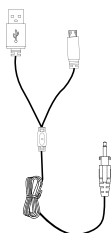
(Screwdriver required
for wall mounting)



Adhesive strips
(for flat micro USB cable,
only for Model AC310)



Flat micro USB cable
(for camera adapter,
only for Model AC310)

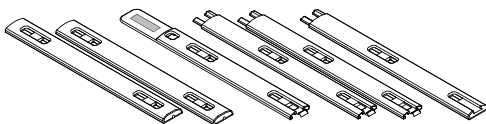


Split USB cable
(only for
Model AC315)

* Always place printed side up *



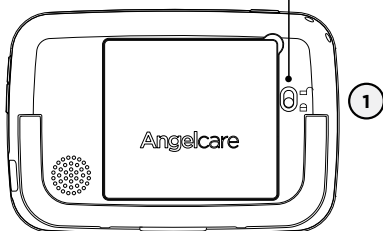
Wired movement Sensor Pad
(only for Model AC315)



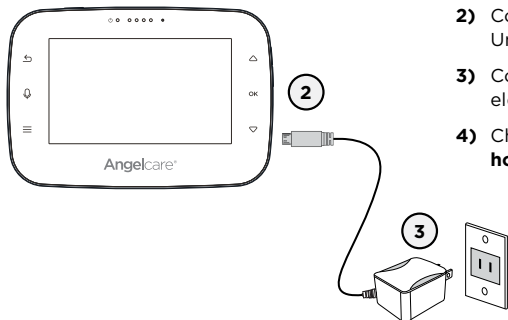
6 cord covers
(only for Model AC315)

STEP 1 - CHARGING THE PARENT UNIT (9 HOURS)

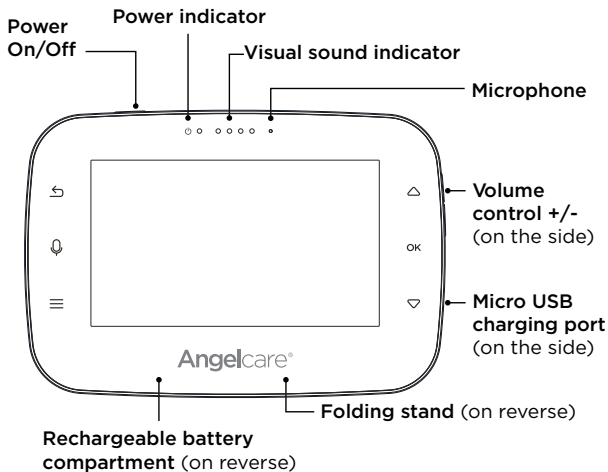
Battery compartment lock



- 1) Unlock the battery compartment on the reverse and remove the cover. Insert the provided rechargeable battery into the compartment. Contacts of the battery and the contacts in the compartment must be aligned.



- 2) Connect the USB plug to the Parent Unit.
- 3) Connect the power adapter with an electrical outlet.
- 4) Charge the unit for **9 continuous hours prior to first use.**

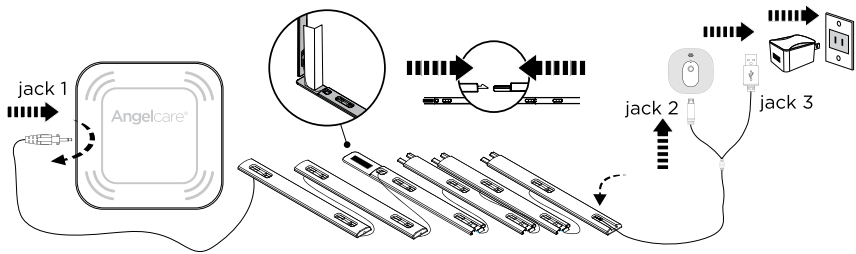
PARENT UNIT:**! WARNING****STRANGULATION HAZARD.**

Children have STRANGLED in cords:

- Keep adapter cords out of the reach of children (more than 1 meter away).
- Because of the serious strangulation risk to infants and toddlers, parents and caregivers should never place the Camera within 1 meter of a crib.
- **NEVER** use Sensor Pad without the cord covers. Check cord covers before each use to ensure it is securely placed under the leg of the crib. Discontinue use of Sensor Pad if any cord covers are damaged or broken.
- **NEVER** use extension cords with adapters. **ONLY** use the adapters provided. This product is not a toy. Never allow children to play with it.

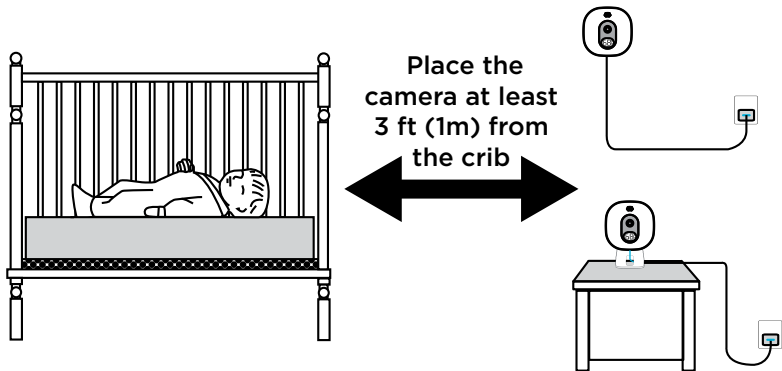
STEP 2 - POSITIONING THE MOVEMENT SENSOR

Note: If you have model AC310 (no Sensor Pad) go to page 11, step 3.

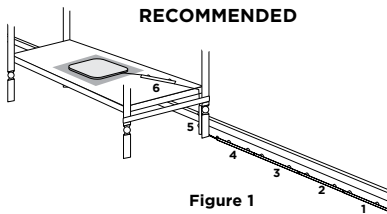


- 1) Insert jack 1 into the Sensor Pad port, twist it clockwise to lock it.
- 2) Position the Sensor Pad, printed side up, under the mattress in center of the crib.
- 3) Snap the cord covers together and place them as shown on next page.
- 4) Remove any cord slack to make sure no parts of the cord are loose.
- 5) Insert jack 2 (micro-USB) into the camera.
- 6) Insert jack 3 (USB) into the included AC adapter and plug into power supply.
- 7) Verify the wired Sensor Pad icon is on the status bar of your Parent Unit (see page 13).

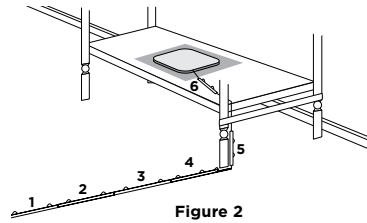
2.1 - SELECT A LOCATION FOR THE CAMERA



2.2 - SELECT THE CRIB LEG TO SECURE THE CORD COVERS

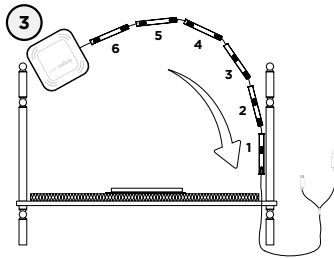
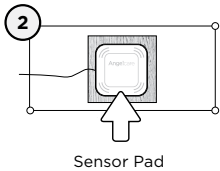


OR



Use the crib leg by the wall closest to the Camera (**Figure 1**). In cases where the Camera is across the room, use the leg closest to the Camera to position the covered wire (**Figure 2**). It is always preferable that the covered cord run along a wall.

2.3 - INSTALL THE SENSOR PAD ON THE MATTRESS SUPPORT



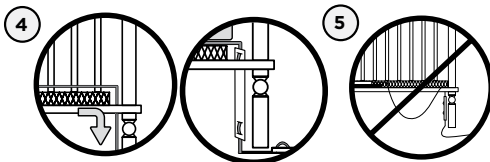
- 1) Remove the mattress from the crib.
- 2) Place the Sensor Pad - printed side up - **on top of the hardboard**.
- 3) Run the connection pin, warning label and the first 5 cord covers down along the backside of the crib leg, **between the mattress support and the inside edge of the crib**.

IMPORTANT

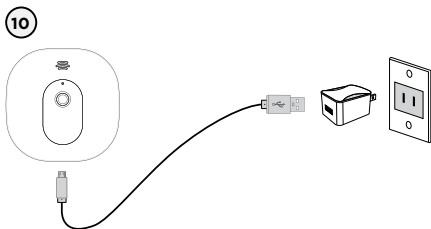
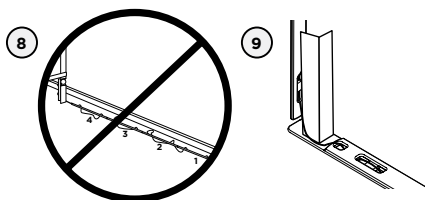
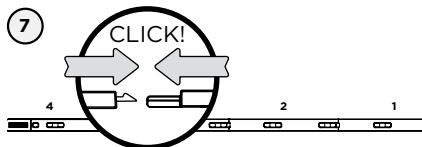
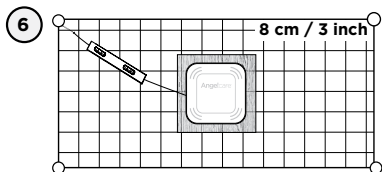
If your crib does not have a stable surface for the Sensor Pad, you will need to place a support under it. This hardboard support should be at least 6" (6 mm) thick and should have minimum dimensions of 13" x 13" (33 cm x 33 cm). This support board must be larger than the Sensor Pad surface area.



Hardboard



- 4) Bring the first 4 cord covers down the floor, and keep the 5th cord cover vertically, along the backside of the crib leg, **between the mattress and the inside edge of the crib**.
- 5) Remove any cord slack to make sure no parts of the cord are loose.



6) Place the 6th cord cover approximately **8 cm / 3 inch** from the edge of the mattress support.

7) Snap together the remaining cord covers that will run along the floor.

1) Remove any cord slack to make sure no parts of the cord are loose.

2) Peel off the double-sided tape on the 4th cord cover and place it securely under the crib leg.

3) Install the Camera on a flat, stable surface facing the crib at a distance of at least **1 meter / 3 feet** and plug the Sensor Pad cord into the Camera.

4) Check to make sure the Sensor Pad has not moved from position.

5) Place the mattress back inside the crib.



! WARNING STRANGULATION HAZARD

- Remove all slack from Sensor Pad Cord.
- When lowering the mattress support as your child grows, slide the vertical Cord Cover downward so it remains approximately in the center between the mattress support and the floor. Slide the Sensor Pad Cord through the Floor Cover to eliminate any additional slack.

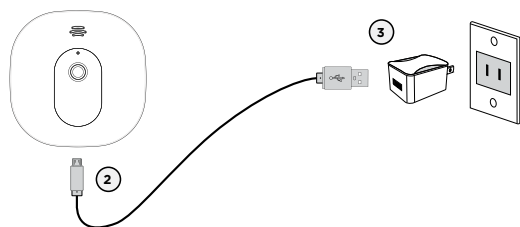
- The Sensor Pad is not designed for use with adults, children or infants older than 24 months.
- Discontinue used of the Sensor Pad when child is older than 24 months. Remove Sensor Pad from crib and store for future use.
 - **BEFORE FIRST TIME USE:** To test that the unit is ready for use, refer to instruction manual on how to test that the installation has been done correctly.

- If the bottom of the crib is not a solid, stable surface you will need to place a hard support board (not included) underneath the Sensor Pad to ensure correct operation of the system.
- Place the Sensor Pad directly underneath the mattress (and on top of support board, if needed) in the center of the crib. Make sure there is nothing between the mattress and Sensor Pad to interfere with operation.
- **The Sensor Pad is designed to work with all regulatory standard mattresses. It is not compatible with hollow core mattresses or mattresses containing memory foam that comes in contact with the Sensor Pad.**
- Never immerse the Sensor Pad in water or other liquids!

IMPORTANT

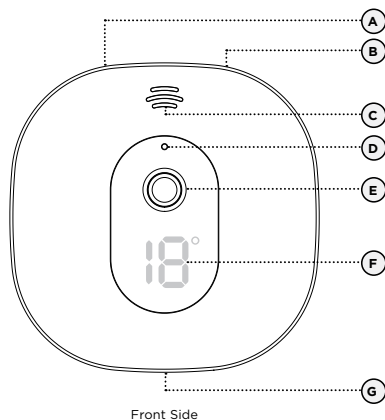
Place the crib near a supporting wall and far from air currents. Install the Camera on a flat, stable surface facing the crib at a distance of at least **1 meter / 3 feet**. Make sure to plug the adapter to the socket outlet nearest to the equipment and that is easily accessible.

STEP 3 - POSITIONING THE CAMERA



- 1) Place the Camera at a **minimum of 1 meter / 3 feet** away from the crib.
- 2) Connect the USB plug to the Camera.
- 3) Connect the USB plug with the power adapter and then into an electrical outlet.
- 4) Adjust the camera using the magnetic mount to get the best view of baby in the crib.

3.1 - CAMERA



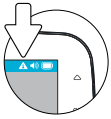
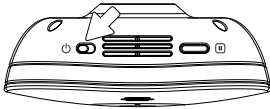
- A) POWER ON/OFF
- B) Pause Sensor Pad
- C) Speaker
- D) Microphone
- E) Camera
- F) Room temperature display
- G) Micro USB charging port

SWITCHING ON YOUR MONITOR

1



2



When Parent Unit is turned **ON** and Camera is **OFF**, Parent Unit will display **OUT-OF-RANGE** mode.



- 1) Press and hold the Parent Unit **ON/OFF** button for 2 seconds until LCD screen is switched **ON**. Angelcare's logo will be shown for 1 second.
- 2) Slide the Camera **ON/OFF** switch to the **ON** position
- 3) The Parent Unit will now display **Video** mode screen.

If there is a lost connection between the 2 units after 15 seconds, the **Out-of-Range** alarm will sound on the Parent Unit (refer to troubleshooting):

- The **Out-of-Range** icon will appear on the screen.
- The **Out-of-Range** icon will appear on the info bar.

INFO BAR IMPORTANT ICONS

Sensor Pad Status icons: Indicates the current status of the Sensor Pad



Normal Status



Sensor Pad Alert



Sensor Pad is Paused



Low battery

CAM 1 Camera icons: Indicates which camera is currently viewed



Talk icon: Indicates when the Talk button is being pressed



VOX icon: Indicates when the camera is in VOX mode

18°C **Temperature icon:** Indicates room temperature



Too Warm



Too Cold

Connection Icon: Indicates the connection quality between the Parent Unit and the Camera



Out-of-Range



Poor connection



Medium connection



Good connection

Sound Level Icon: Indicates sound level



Mute (0/5)



2/5



3/5



4/5



5/5

Battery Level icon: Indicates battery life



Empty



1/4 Full



1/2 Full



3/4 Full



Full



Fully charged

STEP 4 - GETTING TO KNOW YOUR MONITOR



The Angelcare® monitor can be used with the pre-program factory settings or you can also customize your settings to your preference. Main menu on the LCD display shows the different operation settings. Use the direction keys to change or check the different functions on the Parent Unit.

Pressing the **Main Menu** icon ≡ on the Parent Unit allows access to activate/change any settings. Use the navigation and OK icons to change/check/save your preferences.

Press the **arrow back** button ↶ to exit or to go back to main menu when in sub-menu.

IMPORTANT

When in menu or sub-menu modes, sound transmission between Parent and Camera(s) will be temporarily deactivated. ONLY movement-detection alarm will remain active (if function is activated).

4.1 - SENSOR PAD

MODEL AC315 ONLY. MODEL AC310 (NO SENSOR PAD) GO TO STEP 4.2.

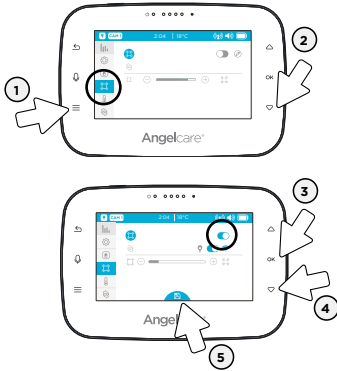
IMPORTANT

- To ensure adequate monitoring of your baby's movements, you can adjust the sensitivity of the Sensor Pad in the main settings menu.
- Set a high sensitivity for a newborn and a lower sensitivity as the baby grows and gains weight. A thicker mattress will also need a higher sensitivity (adjust as required).
- Alarm will sound if there is no movement after 20 seconds.

IMPORTANT

The Sensor Pad is not designed for use with adults, children or infants older than 24 months. Once you are finished using the Sensor Pad, deactivate the movement function then remove it from the baby's crib and store it away.

TO ACTIVATE THE SENSOR PAD:

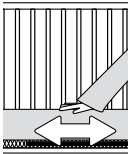


- 1) Press **Menu** ≡ to access the main menu.
- 2) Use the **down arrow** ▾ to select the Sensor Pad settings menu.
- 3) Press **OK** to access the Sensor Pad settings menu. Press **OK** again to activate the Sensor Pad (the toggle button will turn blue).
- 4) Press the **down arrow** ▾ twice. The save icon at the bottom will be highlighted.
- 5) Press **OK** to save the settings.

TO TEST THE SENSOR PAD:

IMPORTANT

- Test your monitor before first use.
- Test your monitor regularly to ensure it is functioning correctly.
- Test your monitor every time you move the Sensor Pad to a different place.



- 1) After activating the Sensor Pad, the alarm should sound after 20 seconds.
- 2) Rub your hand over the mattress to confirm the alarm stops.



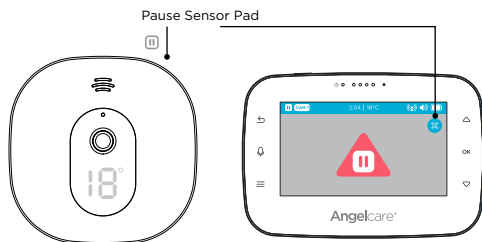
MOVEMENT ALARM

- Alarm activates when no movement is detected by the Sensor Pad for 20 seconds.
- Both the Parent Unit and the Camera speakers will emit continuous beeps.
- Movement Alarm icon will show on the LCD screen.

IF THE ALARM DOES NOT SOUND

- Avoid contact with the crib while Sensor Pad is in operation.
- Place the crib near a supporting wall to reduce vibrations.
- Adjust the Sensor Pad sensitivity level.
- Do not use bedside crib, mobile, fans, loud music or anything else that may cause vibration.

PAUSING AND RESTARTING THE SENSOR PAD:



- If you remove baby from the crib to feed/comfort, you can pause the Sensor Pad:

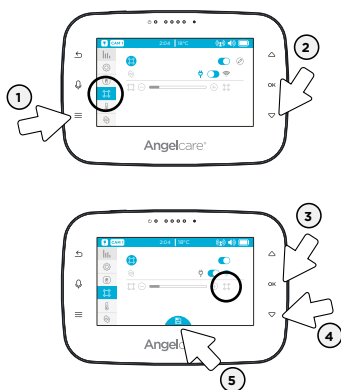
1. Press **OK** twice on the Parent Unit to see pause icon. To deactivate press **OK** again
2. Press the pause button on the Nursery Unit to see pause icon. To deactivate press the pause button again.

- Don't forget to restart by utilizing the same methods to re-engage the Sensor Pad.

IMPORTANT

If you do not pause the Sensor Pad, the alarm will sound if there is no movement after 20 seconds

TO ADJUST THE SENSOR PAD SENSITIVITY LEVEL:



- 1) Press **Menu** ≡ to access the main menu.
- 2) Use the **down arrow** ▾ to select the Sensor Pad settings menu.
- 3) Press **OK** to access the Sensor Pad settings menu. Press the down arrow twice and then press **OK**.
- 4) Use the **up/down arrows** △ ▾ to adjust the sensitivity level and confirm by pressing **OK**.
- 5) Press **down arrow** ▾ once until the save icon at the bottom is highlighted.
- 6) Press **OK** to save the settings.

4.2 - BATTERY

HOW TO CHECK THE BATTERY:

Unplug the adapter from the Parent Unit and check the battery level indicator.



HOW TO CHARGE THE BATTERY IN THE PARENT UNIT:

Leave the Parent Unit connected to power to fully charge the unit. Although the battery at 1/4 capacity works normally, we recommend that you fully recharge it.

PARENT UNIT BATTERY ALERT

- Alert activates when the battery needs to be recharged.
- Parent Unit will emit a beep sound every 30 seconds.
- **Battery Alert** icon will show on LCD screen.

YOU ARE NOW READY TO USE YOUR MONITOR

The Angelcare® monitor can be used with the pre-programmed factory settings or you can also customize your settings to your preference.

DEFAULT SETTINGS

Parent Unit Volume:	Level 3 (of 4)
NU Speaker Volume:	Level 3 (of 4)
Camera Microphone Sensitivity:	Level 2 (of 4)
Movement Mode:	ON (AC315) OFF (AC310)
Sensor Pad Sensitivity:	Level 2 (of 4) (AC315)
Temperature Unit:	Celsius
Temperature Alert:	OFF
Temperature Graphing:	OFF (AC310) ON (AC315)
Movement Graphing:	ON (AC315)
VOX:	OFF
Camera Color Changing Mode:	White (No Color)
Screen Saver Timer:	ON (30 seconds)
LCD Brightness:	Level 3 (of 5)

STEP 5 - ACTIVATING AND DEACTIVATING ADDITIONAL FUNCTIONS

IMPORTANT

When in the menu or sub-menu modes, sound transmission between Parent and Cameras will be temporarily deactivated. ONLY the movement detection alarm will remain active (if function is activated).

IMPORTANT

Movement function is pre-activated whether the Sensor Pad is plugged in or not. If there is no movement on the Sensor Pad after 20 seconds, a series of loud beeps will emit from the Parent Unit and Nursery Unit - this is the movement alarm.

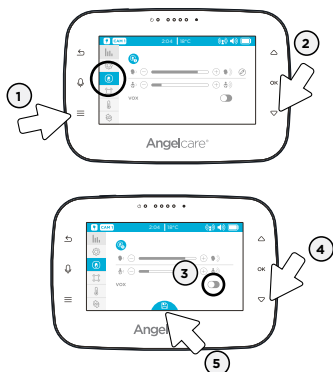
When not monitoring movement or changing/activating any settings on your monitor, to prevent this alarm you can either:

1. Plug in/connect the Sensor Pad and gently tap the top of the Sensor Pad
2. Deactivate the movement function and refer to step 4.1

5.1 - SOUND TRANSMISSION

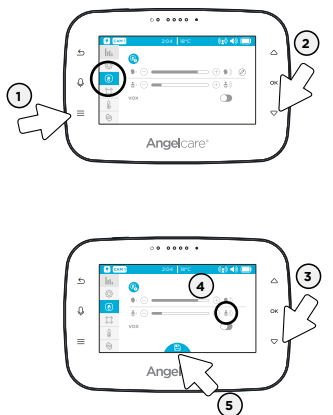
VOICE ACTIVATION (VOX ON) OR CONTINUOUS SOUND (VOX OFF) MODE

SELECT VOX ON OR VOX OFF



- 1) Press **Menu** \equiv to access the main menu.
- 2) Use the **down arrow** ∇ to select the Camera settings menu and press **OK** to access it.
- 3) Press the **down arrow** ∇ twice to select VOX **ON/OFF** toggle. Press **OK** to change setting. Toggle will turn blue when VOX is **ON**.
- 4) Press the **down arrow** ∇ until the save icon at the bottom is highlighted.
- 5) Press **OK** to save the settings.

TO ADJUST THE SOUND SENSITIVITY (VOX): THIS CAN ONLY BE ADJUSTED WHEN VOX IS ACTIVATED



- 1) Press **Menu** \equiv to access the main menu.
- 2) Use the **down arrow** ∇ to select the Camera settings menu and press **OK** to access it.
- 3) Press the **down arrow** ∇ once to select the VOX sensitivity and press **OK** to access it.
- 4) Adjust the sensitivity level with the **up/down** arrows $\triangle \nabla$ and confirm by pressing **OK**.
- 5) Press the **down arrow** ∇ until the save icon at the bottom is highlighted.
- 6) Press **OK** to save the settings.

5.2 - TALK BACK

Your parent monitor is equipped with talk back . This feature allows you to talk to baby without being in the nursery.

TO ACTIVATE TALK BACK:

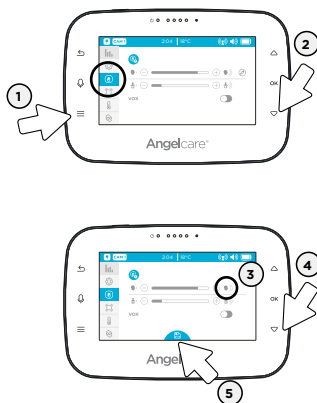


- 1) Press the **microphone button** μ to activate two way talk.
- 2) Make sure you speak into the microphone.

IMPORTANT

When talk back is activated, all menu navigation is disabled.

TO ADJUST THE CAMERA VOLUME:



- 1) Press **Menu** ≡ to access the main menu.
- 2) Use the **down arrow** ▾ to select the Camera settings menu and press **OK** to access it.
- 3) Press **OK** to select the two way talk volume level.
- 4) Adjust the volume level with the **up/down** arrows △ ▾ and confirm by pressing **OK**.
- 5) Press the **down arrow** ▾ until the save icon at the bottom is highlighted.
- 6) Press **OK** to save the settings.

TO ACTIVATE SOUND:



- 1) Press the **Volume up / Volume down** button at the right side of the parent unit to adjust the sound level.
- 2) To mute the sound level press the **Volume down** button until the mute symbol is displayed.

IF YOU HEAR NO SOUND:

- Check that both units are powered **ON**.
- Check that Parent Unit is not on **MUTE**.
- Check the battery on the Parent Unit (recharge it if necessary).
- Bring the Parent Unit closer to the Camera.

IMPORTANT

To avoid feedback (whistling), keep both units at least **3 meters / 10 feet** apart.

5.3 - ROOM TEMPERATURE DISPLAY

TO CHANGE FROM CELSIUS TO FAHRENHEIT:



- 1) Press **Menu** ≡ to access the main menu.
- 2) Use the **down arrow** ▾ to select the temperature settings menu and then press **OK** to access it. Press **OK** again to enter the temperature unit setting.



- 3) Press **OK** to switch between °F and °C.
- 4) Press **down arrow** ▾ once, the save icon at the bottom is highlighted.
- 5) Press **OK** to save the settings.

TO ACTIVATE THE ROOM TEMPERATURE ALERT:



- 1) Press **Menu** ≡ to access the main menu.
- 2) Use the **down arrow** ▾ to select the alarm settings menu and then press **OK** to access it.



- 3) Press down arrow ▾ once to enter alarm menu and then press **OK** to access it
- 4) Press **OK** to switch the temperature alarm **ON/OFF**.



- 5) Press the **down arrow** ▾ 3 times, the save icon at the bottom is highlighted.
- 6) Press **OK** to save the settings.

TO SET THE ROOM TEMPERATURE RANGE:



- 1) Press **Menu** ≡ to access the main menu.
- 2) Use the **down arrow** ▾ to select the alarm settings menu and then press **OK** to access it.



- 3) Press down arrow once ▾ to enter alarm menu and then press **OK** to access it
- 4) Press the **down arrow** ▾ twice and then **OK** to set the temperature limit.
- 5) Set the lower temperature limit with the **up/down arrows** △ ▾ and confirm with **OK**. Do the same for the upper limit and confirm with **OK**.



- 6) Press the **down arrow** ▾, the save icon at the bottom is highlighted.
- 7) Press **OK** to save the settings.

TO SET THE CAMERA COLOR CHANGING MODE:

When activated, if the temperature goes outside of your set preferences, the temperature digits on the Nursery Unit will either:

TOO HOT: display red

TOO COLD: display blue

Within your preferences: display white



- 1) Press **Menu** ≡ to access the main menu.
- 2) Use the **down arrow** ▾ to select the alarm settings menu and then press **OK** to access it.



- 3) Press the **down arrow** ▾ once to select alarm setting menu and press **OK**.
- 4) Press the **down arrow** ▾ once and then **OK** to turn the color changing mode on or off.



- 5) Press the **down arrow** ▾ twice, the save icon at the bottom is highlighted.
- 6) Press **OK** to save the settings.



TEMPERATURE ALERT

- Alert activates when temperature reaches maximum or minimum set temperature.
- Parent Unit will emit 4 consecutive beeps, every 5 seconds.
- **Temperature Alert** icon will show on LCD screen.

5.4 - HOW TO CHANGE TIME

For model **AC310**, please skip to Step 1.

For model **AC315**:



- 1) Press **Menu** ≡ to access the main menu.
- 2) Use the **down arrow** ▾ to select the general settings menu and press **OK** to access it. Press **OK** again to access the time settings menu.
- 3) Press **OK** to switch between 12 h and 24 h mode.
- 4) Press the **down arrow** ▾ once and then **OK** to set the time.
- 5) Set the hours with the **up/down arrows** △ ▾ and confirm with **OK**. Do the same for the minutes and am/pm display and confirm with **OK**.
- 6) Press the **down arrow** ▾, the save icon at the bottom is highlighted.
- 7) Press **OK** to save the settings.

IMPORTANT

Please remember to turn the Sensor Pad back on after setting the time / date if deactivated.

5.5 - HOW TO CHANGE DATE



- 1) Press **Menu** ≡ to access the main menu.
- 2) Use the **down arrow** ▾ to select the general settings menu and press **OK** to access it.
- 3) Press the **down arrow** ▾ once and then **OK** to access the date settings menu.
- 4) Press **OK** to switch between Month/Day/Year and Day/Month/Year display.
- 5) Press the **down arrow** ▾ once and then **OK** to set the date.
- 6) Set the day with the **up/down arrows** △ ▾ and confirm with **OK**. Do the same for the month and year and confirm with **OK**.
- 7) Press the **down arrow** ▾, the save icon at the bottom is highlighted.
- 8) Press **OK** to save the settings.

IMPORTANT

Please remember to turn the Sensor Pad back on after setting the time / date if deactivated..

5.6 - SCREEN SAVER

Allows you to set the screen saver.



- 1) Press **Menu** ≡ to access the main menu.
- 2) Use the **down arrow** ▾ to select the general settings menu and then **OK** to access it.
- 3) Press the **down arrow** ▾ twice and then **OK** to access the screen saver settings menu.
- 4) Press **OK** to switch the screen saver on or off.
- 5) Press the **down arrow** ▾ once and then **OK** to set the delay before screen saver activates .
- 6) Use the **up/down arrows** △ ▾ to select between 30 seconds to 3 minutes. Confirm with **OK**.
- 7) Press the **down arrow** ▾, the save icon at the bottom is highlighted.
- 8) Press **OK** to save the settings.

NOTE:

The LCD screen will turn black when video is in **Screen Saver** mode. Press any button to return to **Video** mode.

5.7 - MOVEMENT AND TEMPERATURE MONITORING

(Model AC310 has Temperature Monitoring Only)

Activity analysis and room temperature tracking give you insight into your little one's activity level during sleep, helping you to better adapt routines and respond to their needs. The movement monitoring records data every ten seconds. Three times every hour the system compiles the collected data and a "movement activity report" can be viewed on the Parent Unit.

TO TURN ON MOVEMENT AND TEMPERATURE MONITORING:

NOTE:

Model AC315 should be defaulted to **ON**. Model AC310, you will need to turn monitoring **ON**.

IMPORTANT

Before activating the movement and temperature monitoring, ensure you have set the date and time in sections 5.4 and 5.5.



- 1) Press **Menu** ≡ to access the main menu.
- 2) Use the **down arrow** ▾ to select the general settings menu and then **OK** to access it.
- 3) Press the **down arrow** ▾ three times and then **OK** to access the monitoring settings.



- 4) Press **OK** to select monitoring **ON/OFF** toggle. Press **OK** to change setting. Toggle will turn blue when monitoring is **ON**.
- 5) Press the **down arrow** ▾, the save icon at the bottom is highlighted.
- 6) Press **OK** to save the settings.

NAVIGATING MOVEMENT AND TEMPERATURE REPORTS:



- 1) Press **Menu** ≡ to access the main menu.
- 2) To view the movement and temperature reports, press **OK**.
- 3) Press **OK** to highlight/select the first set of arrows. Use the **up/down arrows** △ ▾ to navigate page by page.
- 4) Press **OK** to highlight/select the second set of arrows (double arrows). Use the **up/down arrows** △ ▾ to navigate day by day.



- 5) Press **OK** to deselect the arrows.
- 6) Press the **back arrow** ⏪ to go back to the Menu.

IMPORTANT MONITORING BUTTONS AND ICONS

Navigation Icons:

◀ Go to previous page ▶ Go to next page ◀◀ Go to previous day ▶▶ Go to next day

Sensor Pad Movement Levels: Indicates the amount of movement from your Sensor Pad

◻ Low Movement ◻ Medium Movement ◻ High Movement

Graphing Icons:

🚨 Indicates an alert during the period ⏻ Indicates the system was turned off during the period

TO DELETE GRAPHING DATA:

Allows you to delete saved statistical graphs.



- 1) Press **Menu** ≡ to access the main menu.
- 2) Use the **down arrow** ▼ to select the general settings menu and then **OK** to access it.
- 3) Press the **down arrow** ▼ three times and then **OK** to access the graph delete menu.
- 4) Press **OK** to activate or deactivate the function to save graphical data for statistic evaluation.
- 5) Press the **down arrow** ▼ and then **OK** to delete previously saved graph data. If no data has been saved yet this option will not be available.
- 6) Press the **down arrow** ▼, the save icon at the bottom is highlighted.
- 7) Press **OK** to save the settings.

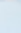
5.8 - DIGITAL PAN AND ZOOM

Allows you to zoom in to twice the normal view.



- 1) Press **OK** on the Parent Unit.
- 2) Press the **down arrow** ▼ twice to select the zoom function.
- 3) Press **OK** to activate the zoom.




- 4) Use the **arrow keys** to zoom in on what you want to see more closely. Press **OK** to switch between vertical and horizontal movement.
- 5) Press the **back arrow**  twice to switch back to normal viewing mode. Zoom is deactivated.


5.9 - LCD SCREEN BRIGHTNESS

Allows you to adjust the LCD screen brightness on the Parent Unit.



- 1) Press **OK** on the Parent Unit.
- 2) Press the **down arrow**  once to select the brightness control. Press **OK** to access brightness settings.



- 3) Use the **arrow keys** to decrease / increase the brightness level.
- 4) Press **OK** to confirm and then **back arrow**  once to switch back to normal viewing mode.

STEP 6 - ADDING ACCESSORIES

6.1 - ADDING A WIRED SENSOR PAD (AC310 ONLY)

If you have purchased a wired Sensor Pad, please refer to page 8, step 2, to add this to your monitor.

To activate/deactivate the Sensor Pad, and adjust if required, please refer to page 13, step 4.1.

6.2 - ADDING AN ADDITIONAL CAMERA

If you have purchased an Accessory Camera, please follow the steps below to add it to your monitor.



- 1) Press **Menu** ≡ to access the main menu.
- 2) Use the **down arrow** ▾ to select the pairing settings menu and then **OK** twice to access it.
- 3) Press the **down arrow** ▾ once and press **OK** to select/highlight CAMERA 2 (icon will be greyed out).
- 4) Plug in and turn your Camera on.
- 5) Press and hold the **Pause / Pairing** button [⏸] on the top right of the Camera.
- 6) When the **trash can** icon ☒ shows up, the Camera is now paired.
- 7) Press the back arrow ↶ to save.

VIEWING MULTIPLE CAMERAS:

With more than one camera you can view each camera individually or use the split screen mode to view all cameras connected simultaneously. Follow the steps below for multi-camera viewing:



- 1) Press the **OK** key on your Parent Unit.
- 2) Use the **down arrow** ▾ to select the Camera icon [📷] and press **OK**. The Camera Select Menu will pop-up and active cameras will have an icon with a camera number (*inactive cameras will be greyed out*).
- 3) To select an individual Camera to view, use the **down arrow** ▾ to highlight the desired Camera and press **OK**. The CAM # icon will appear in the left hand side of the info bar.
- 4) To view the split screen option, from the Camera Select Menu, use the **down arrow** ▾ to highlight the last Camera icon [📷], and press **OK**.

TROUBLESHOOTING

TAKING CARE OF YOUR RECHARGEABLE BATTERY

- Ensure that you fully charge your battery for 9 hours before its first use.
- To maintain maximum battery life it is recommended that you fully discharge your battery periodically. If your Parent Unit is not in use, please turn it **OFF**.

FALSE ALARMS WHEN SENSOR PAD IS IN USE

- Turn **OFF** the Camera.
- Verify the connection between the Sensor Pad and the Camera. Unplug and reconnect the cord.
- Make sure there is no bedding between the mattress and the Sensor Pad.
- If the crib has a spring or slat base, place a hardboard between the crib base and the Sensor Pad measuring at least 13 in x 13 in x 1/2 in thick.
- Make sure the Sensor Pad is positioned as described under the setup requirements. Sensitivity may need to be adjusted (refer to page 14).

ALARM WILL NOT SOUND

- Avoid contact with the crib when the monitor is **ON**.
- Place crib near a solid supporting wall to avoid Sensor Pad from detecting movement from outside the crib.
- You may need to decrease the sensitivity (refer to page 14).

NO SOUND IS BEING TRANSMITTED

- Check monitor is not on mute, refer to step 5.1.
- Check the volume level on the Parent Unit and the camera to ensure they are set to an appropriate level.
- Try bringing the Parent Unit closer to the camera.
- Charge the Parent Unit.
- Intermittent sound - change to vox off, refer to step 5.1.

WEAK RECEPTION

- Bring units closer together.
- Change the position of one or both units.
- Place units on a flat surface away from baby's reach.
- Recharge the Parent Unit.

STATIC, DISTORTION, INTERFERENCES (FROM OTHER MONITORS, WIRELESS PHONES, WALKIE-TALKIES, ETC.)

- Rotate Parent Unit or move it away from source of interference.

FEEDBACK (LOUD NOISES EMITTED FROM THE PARENT UNIT)

- Move units farther apart (at least 3 meters).
- Decrease volume on Parent Unit.

THE PARENT UNIT SCREEN IS BLANK

- Turn the Parent Unit back **ON** by pushing and holding the **POWER ON/OFF** button for 2 seconds.
- Recharge the Parent Unit.
- Check the Nursery Unit is on.
- Reconnect the parent and Nursery Unit.

LIMITED WARRANTY

Angelcare® warrants to the original owner of this product that Angelcare® video, movement and sound monitor is free from any material and workmanship defects, for a period of one (1) year from the date of the original purchase. If this monitoring system fails to function properly when used as directed under normal conditions within the one year period, Angelcare® will either repair or replace the product, at our discretion, free of charge. Please contact your distributor.

The product must be accompanied by a proof of purchase, either a bill of sale or other proof that the monitoring system is within the warranty period. Angelcare® will bear the cost of repairing or replacing the product and shipping it back to you.

This warranty does not apply to a product which has been damaged as a result of improper maintenance, an accident, improper voltage supply or any other form of misuse. The warranty is also void if the owner repairs or modifies the product in any way. Angelcare® is not liable for any incidental or consequential damages with regard to this product. The warranty also excludes any liability other than what is stated above. No other warranty is given.

This warranty does not cover products and accessories which are not Angelcare-branded, or any problems that result from usage that is not in accordance with product instructions, failure to follow the product instructions, or problems caused by using accessories, parts or components not supplied by Angelcare.

LEGAL RIGHTS VARY FROM COUNTRY TO COUNTRY. SOME COUNTRIES DO NOT ALLOW THE EXCLUSION OR LIMITATION OF INCIDENTAL OR CONSEQUENTIAL DAMAGES, SO THE ABOVE LIMITATIONS MAY NOT APPLY TO YOU.

WE ARE NOT IN ANY WAY RESPONSIBLE FOR ANY OUTCOME RESULTING FROM THE USE OF THIS PRODUCT.

IMPORTANT! This Angelcare® monitor is a personal care product. Please do not return this product to the store. If you have questions or need help, please call your distributor before returning this product.

TECHNICAL SPECIFICATIONS

Range:

Open field (Open area without obstructions): up to 820 ft / 250 meters.

Number of Channels:

USA/Canada: 24 channels.

Europe: 24 channels.

Power Supply:

1 included Li-Ion battery (Parent Unit)
100 - 240 VAC / 5 VDC adapter for the Parent Unit
100 - 240 VAC / 5 VDC adapter for the camera

1 included rechargeable Li-ion battery and
100 - 240 VAC / 5 VDC adapter for the Parent Unit.

Caution: To reduce the risk of electric shock, do not expose this product to rain or moisture.

Danger of explosion if batteries are incorrectly replaced. The battery included for the Parent Unit is a user replaceable Li-ion rechargeable battery, manufactured by Icon Energy System (Shenzhen) Co Ltd. Only use the Angelcare recommended replacement battery. To obtain information on replacement batteries please contact Angelcare customer service: www.angelcarebaby.com or contact your local distributor. Instructions will be included with the replacement battery. Dispose of exhausted batteries properly according to your local ordinances. Keep all batteries away from children.



Batteries:

- DO NOT mix alkaline standard (carbon-zinc), or rechargeable (NI-CD, NIMH, etc.) batteries.

Transmission:

Data transmission between the Parent Unit and the Camera is made on the 2.4 GHz frequency.

Maximum RF Power Transmitted = 13.6dBm (22.9mW)

Hereby, Angelcare Monitors Inc., declares that this Baby Monitor is in compliance with Directive 2014/53/EU. Please [click here](#) to be directed to the full text version of the EC Declaration of Conformity CE.

PROTECT THE ENVIRONMENT

This electronic equipment contains reusable material and must not be disposed with domestic waste. Please take it to a collecting point for electric and electronic equipment (ask your local authorities for details).

.....
This Angelcare Baby Monitor is a Personal Care Product. **Please DO NOT return this to the store**, but contact us initially for advice and assistance:

Angelcare Helpline on **0345 009 1789**

Website: www.angelcare.co.uk

Email: helpline@babyhelpline.co.uk

.....
NOTE: Helpline is open Monday to Friday, 10am to 4pm, excluding bank holidays.