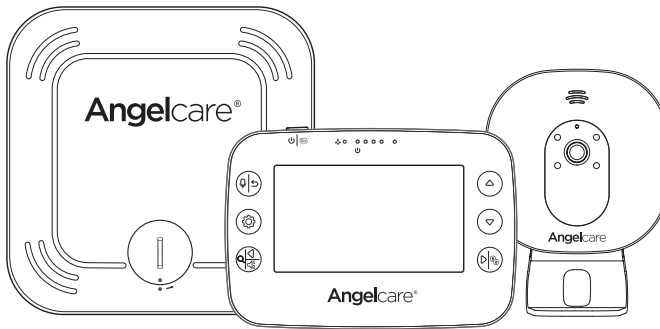


Model AC327

Baby Movement, Sound
and Video Monitor, 4.3 screen



⚠ WARNING

Keep user's guide for future reference. Please read the warnings and safety instructions carefully before assembling & using the product. Failure to follow the warnings and the instructions could result in serious injury or death or damage to the product.

IMPORTANT - INTENDED USE

This product is NOT intended and should NOT be used to prevent Sudden Infant Death Syndrome (SIDS). This product is NOT intended to diagnose, treat, mitigate, cure or prevent any disease or condition. This is a product to monitor the movement of healthy babies and is not a substitute for parental care.

This baby monitor is compliant with all relevant standards regarding electromagnetic fields and is, when handled as described in the User's Guide, safe to use.

WARNINGS

1. Because of the serious strangulation risk to infant & toddlers, parents & caregivers should note the following Warnings.



WARNING - Strangulation Hazard - Children have STRANGLED in cords

- **KEEP** the Nursery Unit and adaptor cords **OUT** of the reach of children more than 1 metre away.
- **NEVER** use extension cords with adaptors. **ONLY** use adaptors provided.
- **This product is NOT a Toy. NEVER allow children to play with it.**

2.

WARNING - MOVEMENT SENSOR PAD - NO ALARM

- Sources of vibration & movement, other than your baby's, can be detected by the Sensor Pad and interfere with the performance of your Angelcare monitor.
- The alarm will not sound if it detects movement other than your baby's.
- High sensitivity settings can pick up other sources of vibration & movement - please read instructions on sensitivity setting to adjust accordingly.
- Other active and older babies (toddlers) in the same room can be detected and the alarm will not sound.
- Ensure the baby's environment is **FREE** from any movements or vibrations when using the Sensor Pad - see below warnings 3 to 11.

3. DO NOT use a cot mobile and other cot accessories that may produce movements or vibrations.

4. Fans (including ceiling), washing machines, floor boards, central heating or loud music are all forms of movement and vibration and may interfere and be detected by the Sensor Pad.

5. If an additional Nursery Unit is added then it must be positioned at least 2 metres minimum from Nursery Unit 1 and Sensor Pad as this could interfere with performance.

6. DO NOT use with bedside cot touching parent's/ carer's bed as the Sensor Pad will detect your movements.

7. DO NOT place the cot against a wall or skirting board as vibrations may be detected.

8. Following removal of baby from the cot, some mattresses may still detect mattress movement due to it forming back into shape and alarm may not sound.

9. Ensure cot is stable to eliminate any movement.

10. Cot should not be placed in reaching distance of another cot or bed.

11. DO NOT use other wireless devices in the same room as the monitor (including mobile phones, microwaves...). They may interfere with signal and performance.

12. **The Sensor Pad is made of plastic and does not permit air to circulate.** Therefore, mildew build up could develop underneath the mattress in the Sensor Pad area.

We suggest rotating & airing /drying the mattress regularly to prevent any mildew. **AVOID CONTACT WITH MOISTURE.** Clean - wipe with a dry lint free cloth.

13. **The Sensor Pad is not suitable for use above age 24 months.**

14. **This product cannot replace responsible adult supervision.**

- This product is designed to aid in the monitoring of your child. When using the monitor, you must still provide the supervision necessary for the continued safety of your child.

- Use this appliance ONLY for its intended use as described in this manual.

- 15. The Sensor Pad is not intended to be used to determine if a child is out of the cot.**
- 16. ALWAYS be sure to immediately check on baby whenever an alarm sounds.**
- 17. Keep cords out of the reach of ANY children.**
- 18. ONLY use the chargers and power adaptors provided. Do not use other types as this may damage the device and battery pack (if included in your model).**

19. Adult assembly required. Keep small parts away from children when assembling.

20. Follow instructions and test this monitor and its functions so you are familiar with it prior to actual use. ALWAYS be sure that both the transmitter and receiver are working properly and are within range of each other – check periodically and when changing location of the Nursery Unit.

21. DO NOT touch the plug contacts especially with sharp or metal objects.

22. DO NOT use the baby monitor near water. Care should be taken so that objects DO NOT fall onto units and that liquids are not spilled into either unit or Sensor Pad through its openings.



23. Keep monitor AWAY from heat sources (such as stoves, radiators, etc.). Heat can damage the case or electrical parts.

24. ALWAYS place both the Nursery Unit and the Parent Unit on a flat solid surface in an upright position that allows for proper VENTILATION. DO NOT place on sofas, cushions, beds, etc. which may block ventilation or anywhere that would muffle the sound or interfere with the normal flow of air.

25. The baby monitor can only be used between 10°C and 40°C (50°F and 104°F) (50°F and 104°F), max 75% RH. Do not exceed 28°C (82,4°F) for long periods of use.

WARNINGS AND SAFETY INSTRUCTIONS - BATTERY SPECIFIC

WARNING

Do not ingest the battery, Chemical Burn Hazard. This product contains a coin/button cell battery. If the coin/button cell battery is swallowed, it can cause severe internal burns in just 2 hours and can lead to death. Keep new and used batteries away from children. If the battery compartment does not close securely, stop using the product and keep it away from children. If you think

batteries might have been swallowed or placed inside any part of the body, seek immediate medical attention.

BATTERY WARNING

KEEP OUT OF REACH OF CHILDREN
Swallowing can lead to chemical burns, perforation of soft tissue, and death. Severe burns can occur within 2 hours of ingestion. Seek medical attention immediately.



WARNING

CONTAINS BUTTON CELL BATTERY. HAZARDOUS IF SWALLOWED – SEE BELOW

BUTTON/COIN CELL BATTERIES ARE HAZARDOUS AND MUST BE KEPT OUT OF REACH OF CHILDREN AT ALL TIMES, WHETHER THE BATTERY IS NEW OR USED.

THESE BATTERIES CAN CAUSE SEVERE OR FATAL INJURIES IN 2 HOURS OR LESS IF SWALLOWED OR PLACED INSIDE ANY PART OF THE BODY.

IF YOU THINK BATTERIES MIGHT HAVE BEEN SWALLOWED OR PLACED INSIDE ANY PART OF THE BODY, SEEK MEDICAL ATTENTION IMMEDIATELY.

IF THE BATTERY COMPARTMENT DOES NOT CLOSE SECURELY, STOP USING THE PRODUCT AND KEEP IT AWAY FROM CHILDREN.

26. Symptoms of battery ingestion and insertion are difficult to diagnose.

No obvious symptoms

Unfortunately, it is not obvious when a button or coin battery is stuck in a child's oesophagus (food pipe). There are no specific symptoms associated with this. The child might:

- cough, gag or drool a lot;
- appear to have a stomach upset or a virus;
- be sick;
- point to their throat or stomach;
- have a pain in their abdomen, chest or throat;
- be tired or lethargic;
- be quieter or more clingy than usual or otherwise "not themselves";
- lose their appetite or have a reduced appetite; and
- not want to eat solid food / be unable to eat solid food.

These sorts of symptoms vary or fluctuate, with the pain increasing and then subsiding.

A specific symptom to button and coin battery ingestion is vomiting fresh (bright red) blood. If the child does this seek immediate medical help.

The lack of clear symptoms is why it is important to be vigilant with "flat" or spare button or coin batteries in the home and the products that contain them.

27. The Parent Unit battery is a replaceable Li-Ion battery. The Wireless Sensor Pad uses a replaceable Button Cell Lithium Battery. Only use the Angelcare recommended replacement

battery (see Technical Specification).

- Danger of explosion if the wrong battery is used or if replaced incorrectly. Refer to User's Guide for correct battery installation.
- DO NOT short circuit supply terminals.

28. DO NOT mix old and new batteries and only use Angelcare recommended replacement batteries (see Technical Specification).

29. The Button Cell Battery represents a small part and a choking hazard – KEEP away from children!

30. Exercise care in handling batteries in order not to short out the batteries with conducting materials such as rings, bracelets and keys.

31. Overcharging, short circuiting, reverse charging, mutilation, or incineration of batteries must be avoided to prevent one or more of the following occurrences: release of toxic materials, release of hydrogen and/or oxygen, gas and rise in surface temperature.

32. DO NOT attempt to recharge batteries provided with or identified for use with this product that are not intended to be charged. The batteries may leak corrosive electrolyte or explode.

33. Incorrect polarity installation of the batteries in the end product must be avoided. Reverse insertion of batteries can cause charging, and that may result in leakage or explosion.

34. Battery swelling can occur with the type of battery used in the Parent Unit if not used or stored correctly including but not limited to the age, usage pattern, environmental conditions (over heating), over-charging, over-discharging, using incorrect chargers and physical abuse/damage. Refer to Angelcare online Battery Warning Statement:

<https://angelcarebaby.com/battery-safety>

35. Remove batteries from units if you store the product over 30 days because the batteries could leak and damage the product.

36. Discard 'dead' batteries as soon as possible since 'dead' batteries are more likely to leak in a product. If a battery has leaked or vented, discard product responsibly.

37. DO NOT store this product, or the batteries provided with or identified for use with this product, in high-temperature & high humidity environments and avoid direct sunlight – this could lead to potential battery leakage, swelling and potential harm and damage. The parent Unit Lithium battery should be stored at 23±5°C (73.4 ± 9°F) at ≤ 75% RH. Always store the product with approximately 50% charge and do not store for more than 3 months without charging.

38. CAUTION

- Danger of explosion if battery is incorrectly re placed. Replace only with the same or equivalent type.
- Battery cannot be subjected to high or low

extreme temperatures, low air pressure at high altitude during use, storage or transportation.

- Replacement of a battery with an incorrect type can result in an explosion or the leakage of flammable liquid or gas.
- Disposal of a battery into fire or a hot oven, or mechanically crushing or cutting of a battery, can result in an explosion.
- Leaving a battery in an extremely high temperature surrounding environment can result in an explosion or the leakage of flammable liquid or gas.
- A battery subjected to extremely low air pressure may result in an explosion or the leakage of flammable liquid or gas.
- The mounting height of the Nursery Unit should be less than 2 meter.
- The applied nameplate is located at the product rear enclosure.

IMPORTANT SAFETY INSTRUCTIONS

39. Sensor Pad –

- If your cot does not have a solid, stationary, completely flat, firm surface including a spring or slat base, place a hard board between the cot base and the Sensor Pad, to ensure correct operation (see specification on STEP 2).
- The Sensor Pad functions with standard cot sprung and foam mattresses and not memory foam (partial or full), hollow frame construction mattresses and water beds. Please consult Angelcare if unsure of mattress compatibility.

40. This monitor uses public airwaves to transmit signals. The Parent Unit may pick up signals or interference from other nursery monitors in your area. Your monitor may even be picked up by other households. To protect your privacy, make sure both units are turned OFF when not in use.

41. Power cord protection - Protect the Adaptor's power cord from being walked on or pinched by furniture or other items – Power supply cords should be routed so that they are not likely to be walked on or pinched by items upon or against them, paying particular attention to cords and plugs, convenience receptacle, and the point where they exit from the product. The socket outlet should be installed near the equipment and should be easily accessible. Make sure to plug the adaptor to the socket outlet nearest to the equipment and that is easily accessible. To disconnect from mains, unplug the adaptor. STOP using the Power Adaptor if it gets damaged or broken in any way.

42. Only use attachments/accessories and replacement parts specified by the manufacturer. Any mounting of the product should follow the manufacturer's instructions.

- DO NOT position this product on an unstable cart, stand, tripod, bracket or table. The product may fall, causing serious injury to a child or adult and serious damage to the product.
- Use ONLY the stand sold with the product.

- Be sure replacement parts are supplied by Angelcare and have the same characteristics as original part. Unauthorised substitution may result in fire, electric shock or fire.

43. Unplug this appliance during lightning storms or when not used for long periods of time.

44. Servicing - DO NOT attempt to service this product yourself as opening or removing covers (except battery door) may expose you to dangerous voltage or other hazards.

- **Power Supply** – see Technical Specification within this guide.

45. Overloading - DO NOT overload wall outlets, extension cords or integral convenience receptacles as this can result in a risk of fire or electric shock.

46. Nursery Unit Antenna - The antenna used for this transmitter must be installed to provide a separation distance of at least 8" (20 cm) from all persons and must not be collocated or operating in conjunction with any other antenna or transmitter.

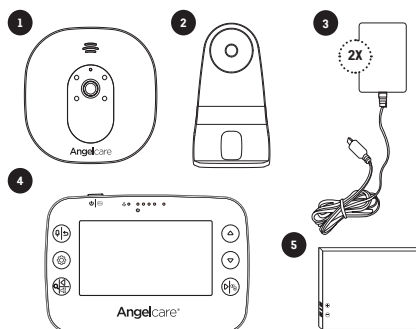
47. Cleaning - Disconnect all units before cleaning. DO NOT immerse any part of the monitor in water. Clean only with a dry cloth.

**E
N**

SET UP REQUIREMENTS

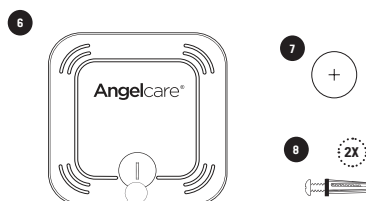
WHAT'S IN THE BOX

- 1 Nursery Unit
- 2 Tabletop stand/Wall Mount (for Nursery Unit)
- 3 2 x AC Adaptors
- 4 Parent Unit
- 5 Lithium Ion Battery Pack (for Parent Unit)
- 6 Sensor Pad
- 7 CR2450 3V Battery (for Sensor Pad)
- 8 Hardware (for wall mounting)

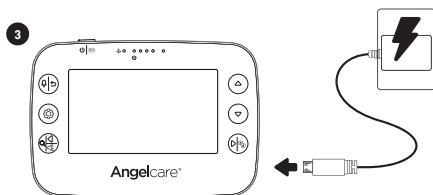
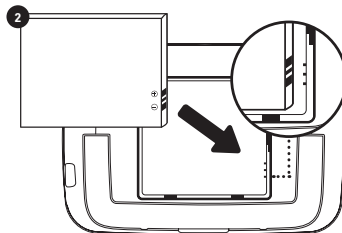
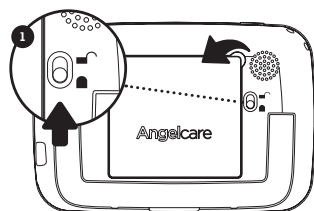


WHAT YOU NEED

Hardboard, if the cot does not have a firm surface (see specification on STEP 2).
Drill or screwdriver (for wall mounting).



1- SETTING UP THE PARENT UNIT



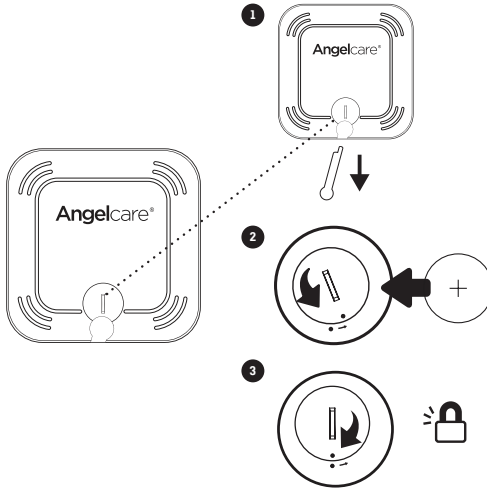
Charge the Parent Unit 8 hours prior to first use.

Regular charging time is 6 hours.

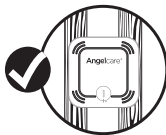
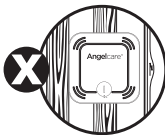
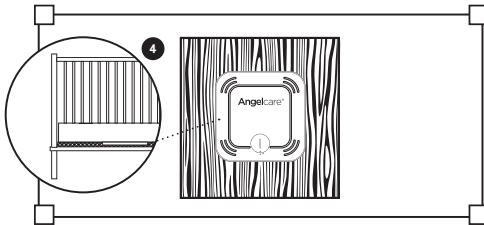


2- SETTING UP THE SENSOR PAD

The Sensor Pad is designed to detect subtle baby movements on the surface of the mattress. The alarm will only sound if **NO** movement is detected for 20 seconds.



1. Remove the tab from the battery holder.
2. Use a coin to remove/replace the battery cover and insert the battery face with + face up.
3. Replace the battery cover, align 2 dots and click to secure.



**Correct positioning
for slatted base**

4. Remove the mattress from the cot, place Sensor Pad - **Angelcare® logo side up** - on base in approximate centre of mattress along the length. It should be centred on the hardboard if your cot requires a hardboard support (see 'IMPORTANT' note below).
5. Replace the mattress.

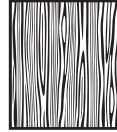




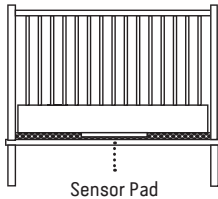
EN

! IMPORTANT

- If your cot does not have a solid, stationary, completely flat, firm surface including a spring or slat base, place a hardboard between the cot base and the Sensor Pad, to ensure correct operation. The hardboard support must measure at least 30 x 30 cm and 6 mm thick. This hardboard support must be larger than the Sensor Pad surface area.
- The Sensor Pad functions with standard cot sprung and foam mattresses and not memory foam (partial or full), hollow frame construction mattresses and water beds. Please consult Angelcare if unsure of mattress compatibility. The hardboard maintains a constant pressure on the Sensor Pad, enabling it to detect the baby's movements even when the baby is at the edges of the cot.


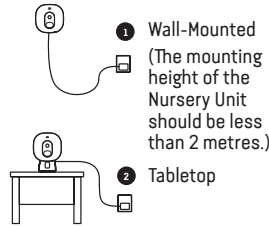


3-SETTING UP THE NURSERY UNIT



Sensor Pad

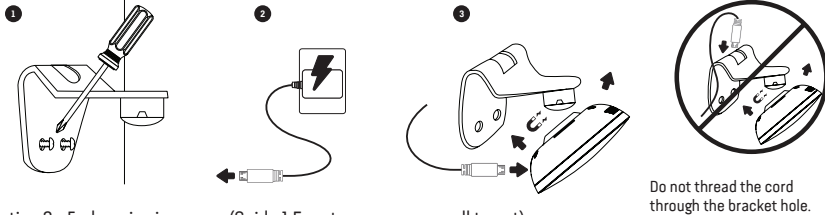
Place the Nursery Unit and Adaptor cord at least **1 metre** from the cot.

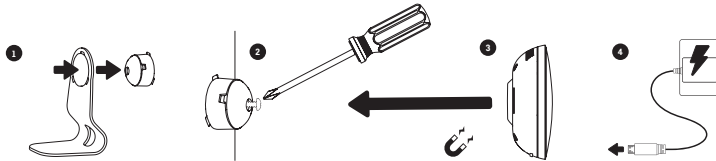
WALL-MOUNTED

NOTE: Before fixing to the wall, review both wall mounted options to achieve best view for you.

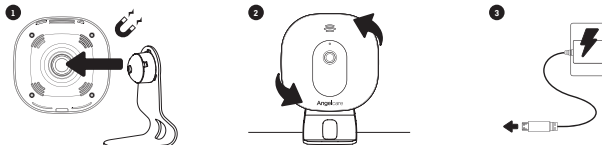
Option 1 - Close viewing range (Guide 1.0 to 1.5 meters - wall to cot)



Option 2 - Further viewing range (Guide 1.5 meters or more - wall to cot)



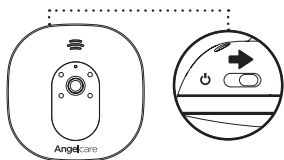
TABLETOP



4- TURNING ON YOUR MONITOR

The Movement Sensor Pad alarm will sound after a few seconds if the child is not in the cot.

NURSERY UNIT



PARENT UNIT



Note:

- Your Nursery Unit and Parent Unit come pre-paired.
- Each time you power **ON** your Nursery Unit, the internal thermometer will need to calibrate to ensure accuracy. This automatic process will take approximately 30 minutes.

PAUSING AND RESTARTING THE SENSOR PAD

- Allows you to pause the Sensor Pad if you remove baby from the cot, e.g. for feeding or comforting. The button has a soft light so easily seen. Ensure to un-pause the Sensor Pad before putting baby in the cot.

NURSERY UNIT



PARENT UNIT

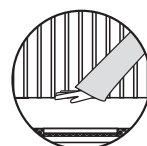


TEST THE SENSOR PAD

1. Sources of vibration & movement other than your baby's can be detected by the Sensor Pad and interfere with the performance of your Angelcare monitor. The alarm will not sound if it detects movement other than your baby's.
2. There are 4 sensitivity settings. The unit is set at level 3 (default) and can be adjusted accordingly.
3. The Sensor Pad will detect false movements if you are touching the cot.
4. The monitor will produce a Rouse alarm single beep tone designed to stir baby if no movement has been detected for 15 seconds. If no further movement is detected, the main alarm will sound at 20 seconds – a series of continuous beeps.

SENSOR PAD FOUR CORNER TEST

1. Place the Sensor Pad at the approximate centre of baby's sleeping area and put the mattress back in place.
2. Switch ON both Nursery & Parent Units – check both units are paired (connected).
3. Immediately pat your hand lightly and continuously on a corner of the mattress **twice** for Sensor to detect movement. If movement is detected you will hear a TIC sound every 5 seconds and PU will flash green for a single sensor pad.
4. Step away from the cot.
5. The alarm will sound from the Nursery and Parent Unit after 20 seconds. If the Alarm **does not sound**, ensure everything is setup correctly and try again; check battery levels on all units, follow the manual for 'NO ALARMS' – the sensitivity setting may require lowering by a single level due to other vibrations/movements.
6. If the alarm sounds, pat your hand lightly on a corner of mattress **twice** for Sensor to detect movement. It may take up to 8 seconds to recognise movement and for alarm to stop.
7. If the alarm continues, even after lightly patting the corner of your mattress twice, adjust the sensitivity higher and repeat this test.





IMPORTANT

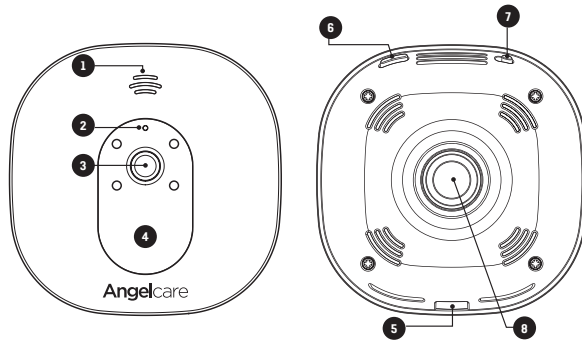
- Test your monitor before first use.
- Prior to use and on a regular basis (before placing your child in the cot) always check the Sensor Pad is detecting no movements or vibrations in its environment.
- Test your monitor every time you move the Sensor Pad to a different place.

5- GETTING TO KNOW YOUR MONITOR

EN

NURSERY UNIT

- 1 Speaker
- 2 Microphone
- 3 Camera Lens
- 4 Power indicator
- 5 Micro USB port
- 6 Pause Sensor Pad / Pairing button
- 7 **Power ON/OFF**
- 8 Magnet for tabletop stand and wall mount

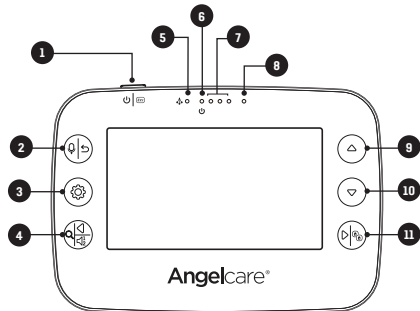


FRONT SIDE

REAR SIDE

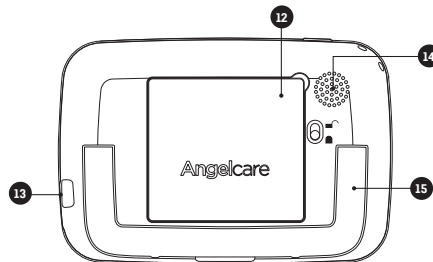
PARENT UNIT

- 1 **Power ON/OFF** (Press & Hold) / Sleep mode (Quickly press & release)
- 2 Talk-back / Return & save settings
- 3 Menu / Select
- 4 Zoom & pan feature / Navigate left / Switch Nursery Unit sound
- 5 Movement indicator (TIC function)
- 6 Power indicator
- 7 Visual sound indicator
- 8 Microphone
- 9 Volume up / Navigate up
- 10 Volume down / Navigate down
- 11 Navigate right / View mode



FRONT SIDE

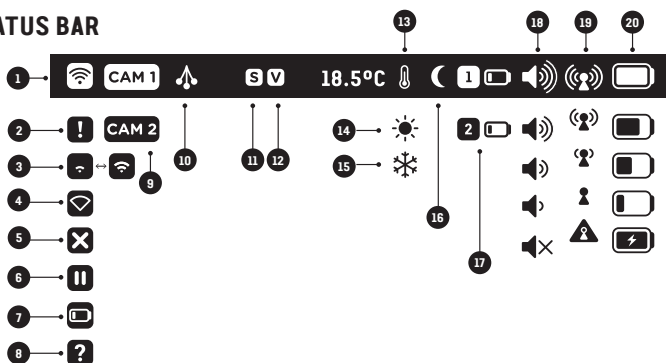
- 12 Rechargeable battery compartment
- 13 Micro USB charging port
- 14 Speaker
- 15 Folding stand



REAR SIDE



TOP STATUS BAR



- | | | |
|--|--|---|
| 1 Sensor Pad movement detection is activated | 9 Nursery Unit selected and broadcasting sound | 16 Night vision is activated |
| 2 Sensor Pad alert | 10 "TIC" function is activated | 17 Second Sensor Pad is low battery - only shown if you have 2 Sensor Pads paired |
| 3 Sensor Pad is connecting | 11 VOX Sound is activated | 18 Volume level indicators |
| 4 Sensor Pad lost link | 12 VOX Video is activated | 19 Reception quality indicators |
| 5 Sensor Pad movement detection is OFF | 13 Temperature alert is activated | 20 Parent Unit battery level indicators |
| 6 Sensor Pad is paused | 14 Temperature alert: too hot | |
| 7 Sensor Pad is low battery | 15 Temperature alert: too cool | |
| 8 Sensor Pad has never been paired | | |

MAIN MENU



- 1 Movement Sensor Pad Activation:**
ON: The Parent & Nursery Units will alarm if there is no movement after 20 seconds.
PAUSE: Allows you to pause the Sensor Pad if you remove baby from the cot, e.g. for feeding or comforting.
 - The Pause icon in the status bar will flash.
 - The Nursery Unit Power indicator will slowly blink.
 Ensure to un-pause the Sensor Pad before putting baby in the cot (Turn movement detection ON).
OFF: When your baby gets older, allows you to turn movement detection OFF and use your monitor for video only.
- 2 Tic Activation:**
 If movement detection is activated, allows you to hear a Tic sound every 5 seconds. In the event you have two Sensor Pads connected, the Tic indication will flash green for Sensor Pad 1 and blue for Sensor Pad 2.
- 3 VOX Sound Set-Up:** VOX Sound means that it will transmit sounds only when it detects them, based on the setting of the sensitivity level (level 4 being the most sensitive). To save power, after 10 seconds, the sound transmission will stop if no sound is detected. **VOX Sound OFF** means the sound monitoring is continuously transmitting, picking up all sounds.
- 4 VOX Video Set-Up:** VOX Video means that when Parent Unit is in sleep mode (black screen) the screen will turn ON only when it detects sounds, based on the setting of the sensitivity level (level 4 being the most sensitive). To save power, after the set time, the sleep mode will be activated. **Video VOX OFF** means the Parent Unit screen will not turn ON if the Nursery Unit is picking up sounds.
- 5 Screen Brightness**
- 6 Temperature Settings**
- 7 General Settings**

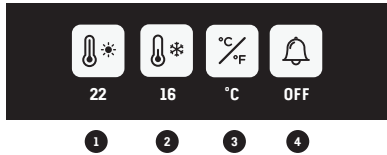


! IMPORTANT

- To confirm your settings, you'll always need to press the button. A confirmation icon will then appear on the screen: Settings have been saved Settings have not been saved
- If you have 2 Nursery Units & 2 Sensor Pads paired with your monitor, you can only change the settings of the viewing Nursery Unit.
- If a function icon appears in grey (grayed out) it means you are unable to use or adjust.

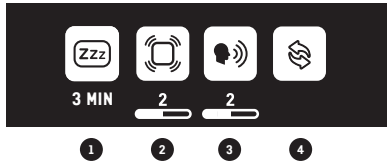
E
N

TEMPERATURE SETTINGS MENU



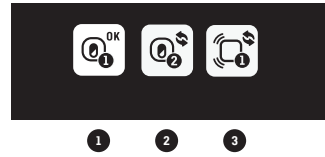
- 1 Set warmer temperature alarm
- 2 Set colder temperature alarm
Note: The range between the minimum and maximum temperature can not be less than 4°C / 7°F.
- 3 Set Celsius or Fahrenheit display
- 4 Activate the temperature alarm

GENERAL SETTINGS MENU



- 1 Sleep Mode Set-Up
- 2 Set Sensor Pad sensitivity:
To ensure adequate monitoring of your child's movements, you can adjust the sensitivity of the Sensor Pad.
- 3 Set Nursery Unit speaker volume
- 4 Pairing Menu

PAIRING MENU



- 1 Nursery Unit 1 Status
- 2 Nursery Unit 2 Status
- 3 Sensor Pad 1 Status

Nursery Unit and Sensor Pad Status Icons:

OK Green: Connected/Paired.

Blue: Add a Nursery Unit or Sensor Pad.

Red: Remove Nursery Unit or Sensor Pad.

Confirmation process ON THE SCREEN:

Blue: "Link" icon animation when pairing (Linking timeout: 60s).

Green: Successful pairing.

Red: Failed pairing, please try again.





ALERTS ICONS



- 1 Sensor Pad alert:** If after 20 seconds there is NO movement detected both the Parent Unit and Nursery Unit speakers will emit loud consecutive beeps - this is the movement alarm.
- 2 Sensor Pad is paused**
- 3 Sensor Pad lost link:** Parent Unit and Nursery Unit speakers will emit loud consecutive beeps.
- 4 Sensor Pad battery is low:** Parent Unit will emit 3 consecutive beeps, every 5 seconds.
- 5 Parent Unit is out-of-range:** Parent Unit will emit 2 consecutive beeps, every 10 seconds.
- 6 Temperature is too cold:** Parent Unit will emit 3 consecutive beeps, every 5 seconds.
- 7 Temperature is too hot:** Parent Unit will emit 3 consecutive beeps, every 5 seconds.

Note: Press any key to **stop alarm** and make the alert icon disappear.

In the case of a **Sensor Pad alarm**, the monitor will Pause the Sensor Pad. In Pause mode, the movement detection feature is disabled. To reactivate the Sensor Pad, simply un-pause the Sensor Pad into the first menu.





6- TROUBLESHOOTING

TAKING CARE OF YOUR RECHARGEABLE BATTERY

- Ensure that you fully charge your battery for 8 hours before its first use.
- To maintain maximum battery life, it is recommended that you fully discharge your battery periodically. If your Parent Unit is not in use, please turn it **OFF**.

NO SOUND IS BEING TRANSMITTED

- Check the volume level on the Parent Unit and the Nursery Unit to ensure they are set to an appropriate level.
- Try bringing the Parent Unit closer to the Nursery Unit to see if you get sound.
- Charge the Parent Unit.

WEAK RECEPTION

- Bring units closer together.
- Change the position of one or both units.
- Place units on a flat surface away from baby's reach.
- Recharge the Parent Unit.

STATIC, DISTORTION, INTERFERENCES (FROM OTHER MONITORS, WIRELESS PHONES, WALKIE-TALKIES, ETC.)

- Rotate Parent Unit or move it away from source of interference.

FEEDBACK (LOUD NOISES EMITTED FROM THE PARENT UNIT)

- Move units further apart (at least 3 metres).
- Decrease volume on Parent Unit.

THE PARENT UNIT SCREEN IS BLACK (PARENT UNIT IS OFF)

- Turn the Parent Unit back **ON** by pushing and holding the **POWER ON/OFF** button for 2 seconds.
- Recharge the Parent Unit.

MOVEMENT SENSOR PAD - NO ALARM

- Sources of vibration & movement, other than your baby's, can be detected by the Sensor Pad and the alarm will not sound.
- Refer to Warnings 3 to 11 and see STEP 4, TEST THE SENSOR PAD.

MOVEMENT SENSOR PAD - FALSE ALARMS

- Replace the Sensor Pad battery CR2450.
- Turn **OFF** the Nursery Unit.
- Sensor Pad False alarms may happen for several reasons, always be sure to immediately check on baby whenever an alarm sounds:
 - Nursery Unit has not been turned **OFF** after you have removed your baby from the cot.
 - Make sure there is no bedding between the mattress and the Sensor Pad.
 - Sensor Pad has not been placed under the mattress properly. Be sure the Sensor Pad is on a flat, firm surface with the printed side facing up.
 - The sensitivity level may also need to be adjusted.
- Refer to Warnings 3 to 11 and see STEP 4, TEST THE SENSOR PAD.

NO SOUND IS BEING TRANSMITTED:

- Check that both units are powered **ON**.
- Check that Parent Unit is not on **MUTE**.

HOW TO CHECK THE PARENT UNIT BATTERY:

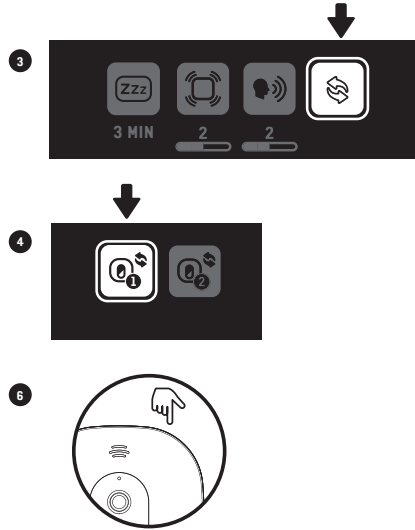
- Unplug the adaptor from the Parent Unit and check the battery level indicator.



LOSS OF CONNECTIVITY BETWEEN THE NURSERY UNIT AND PARENT UNIT

· If your Nursery Unit becomes un-paired from your Parent Unit, please follow the steps below to re-pair them.

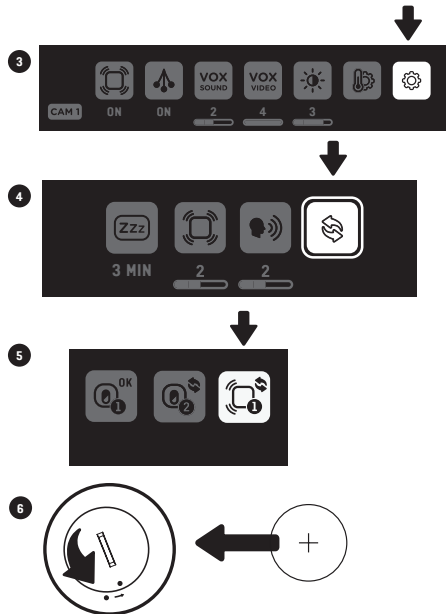
1. Turn ON the Parent Unit and keep the Nursery Unit OFF.
 2. Press menu button.
 3. It will directly jump to General setting menu. Select the Pairing Icon and press menu button.
 4. In the Pairing Menu, select Nursery Unit 1 Icon and press menu button.
- If Nursery Unit 1 is marked as connected select it to go the Nursery Unit 1 Pairing option. You will now need to remove it by selecting the red icon. The linking icon will appear on the screen until Successful Pairing Icon appears on the screen. You'll now be able to proceed with step 4.
5. The Linking Icon will appear on the screen.
 6. Turn ON the Nursery Unit and press and hold its "pause/pairing" button until the power LED starts blinking while pairing.
 7. If the connection has been made, the Green Successful Pairing Icon will appear on the screen and the menu will show the OK Paired Icon.
 8. Otherwise, the Red Failed Pairing Icon will appear on the screen. You will need to try again.



LOSS OF CONNECTIVITY BETWEEN THE SENSOR PAD AND THE NURSERY UNIT

· If your Sensor Pad becomes un-paired from your Parent Unit, please follow the steps below to re-pair them. In order to reconnect your Sensor Pad to your Nursery Unit, you need to make sure the Nursery Unit is paired with the Parent Unit first.

1. Remove the battery of the Sensor Pad.
- Note:** If you have two Sensor Pads, you will need to remove the battery from both of them first and then follow the steps below.
2. Press menu button.
 3. Select the General setting menu and press menu button.
 4. Select the Pairing Icon and press menu button.
 5. In the Pairing Menu, select Sensor Pad 1 Icon and press menu button.
- If Sensor Pad is marked as connected select it to go the the Sensor Pad Pairing option. You will now need to remove it by selecting the red icon. The linking icon will appear on the screen until Successful Pairing Icon appears on the screen. You'll now be able to proceed with step 5.
6. Insert the battery into the Sensor Pad. It will automatically activate it.
 7. If the connection has been made, the Green Successful Pairing Icon will appear on the screen and the menu will show the OK Paired Icon.
 8. Otherwise, the Red Failed Pairing Icon will appear on the screen. You will need to try again.



TECHNICAL SPECIFICATIONS

Range:

Open field (Open area without obstructions):

- Between the Nursery Unit and the Parent Unit: up to 250 metres.
- Between the Nursery Unit and the Sensor Pad: up to 20 metres.

Number of Channels:

Europe: 19 channels.

Thermometer Guidelines:

High Temperature Alarm: 22°C

Low Temperature Alarm: 16°C



Power Supply:

1 included Li-Ion battery (IS275) 1300 mAh 3.7V (manufactured by Icon Energy System (Shenzhen) Co Ltd) for the Parent Unit.

2 x 100-240 VAC / 5V DC 0.6A Dongguan Guanjin Electronics Technology Co., Ltd (UK: K05S050060B or K05B050060B) Adaptors for the Parent Unit and the Nursery Unit.

1 included CR2450 3V battery (Changzhou Jin Tan Chao Chuang Battery Co., Ltd. model number: CR2450H, or GP Batteries International Ltd. model number: CR2450) (wireless Sensor Pad).

Caution: To reduce the risk of electric shock, do not expose this product to rain or moisture.

Danger of explosion if batteries are incorrectly replaced. The battery included for the Parent Unit is a user replaceable Li-ion rechargeable battery. Only use the Angelcare recommended replacement battery. The battery for the Sensor Pad is a user replaceable Lithium (not Li-Ion) battery and is NOT rechargeable. To obtain information on replacement batteries please contact Angelcare customer service: www.angelcarebaby.com or contact your local distributor. Instructions will

ErP Compliance

USE ONLY THE FOLLOWING ANGELCARE® BRAND POWER SUPPLY MODEL NUMBERS:
EU (INCLUDING GERMANY) - MODEL NUMBER: K05S050060G or K05V050060G
UK - MODEL NUMBER: K05S050060B or K05B050060B

See product for compliance marks specific to this device.



be included with the replacement battery. Keep all batteries away from children.

Batteries:

CAUTION: RISK OF EXPLOSION IF BATTERY IS REPLACED BY AN INCORRECT TYPE. DISPOSE OF USED BATTERIES ACCORDING TO THE INSTRUCTIONS.

Transmission:

Transmission between the Parent Unit and the Nursery Unit is made on 2.4 GHz frequency.

Transmission between the Nursery Unit and the Sensor Pad is made on 2.4 GHz frequency.

Hereby, Angelcare Canada Inc., declares that this Baby Monitor is in compliance with Directive 2014/53/EU. The full text of the EU declaration of conformity is available at the following internet address:

<https://www.angelcarebaby.com/declaration-of-conformity>

RF Exposure - This device is designed and manufactured to comply with Radio Frequency (RF) radiation exposure limits for EU for an uncontrolled environment. To maintain the compliance, human exposure to the nursery unit shall not be less than 20 cm during normal operation.

EN

PROTECT THE ENVIRONMENT

The wheelee bin symbols mean that according to local laws and regulations your product and/or its battery shall be disposed of separately from household waste. When the product/battery reaches its end of life take it to a collection point designated by local authorities. The separate disposal and recycling will help conserve natural resources and protect human health and the environment. Refer to User's Guide for removal of batteries.



CUSTOMER CARE - LIMITED WARRANTY

Angelcare® warrants to the original owner of this product that Angelcare® monitor is free from any material and workmanship defects for the term of the warranty period (see warranty table below to determine the warranty for your country). If this monitoring system fails to function properly when used as directed under normal conditions and during the warranty period, Angelcare® will either repair or replace the product, at our discretion, free of charge. Please contact your local distributor to validate warranty and warranty period.

The product must be accompanied by a proof of purchase, either a bill of sale or other proof that the monitoring system is within the warranty period. Angelcare® will bear the cost of repairing or replacing the product and shipping it back to you.

This warranty does not apply to a product which has been damaged as a result of improper maintenance, an accident, improper voltage supply or any other form of misuse. The warranty is also void if the owner repairs or modifies the product in any way. Angelcare® is not liable for any incidental or consequential damages with regard to this product. The warranty also excludes any liability other than what is stated above. No other warranty is given.

This warranty does not cover products and accessories which are not Angelcare®-branded, or any problems that result from usage that is not in accordance with product instructions, failure to follow the product instructions, or problems caused by using accessories, parts or components not supplied by Angelcare.

LEGAL RIGHTS VARY FROM COUNTRY TO COUNTRY. SOME COUNTRIES DO NOT ALLOW THE EXCLUSION OR LIMITATION OF INCIDENTAL OR CONSEQUENTIAL DAMAGES, SO THE ABOVE LIMITATIONS MAY NOT APPLY TO YOU.

WE ARE NOT IN ANY WAY RESPONSIBLE FOR ANY OUTCOME RESULTING FROM THE USE OF THIS PRODUCT.

IMPORTANT! This Angelcare® monitor is a personal care product. Please do not return this product to the store. If you have questions or need help, please call your distributor before returning this product.

Please contact your local distributor for warranty information. Find your local distributor by visiting our website: <https://international.angelcarebaby.com/>

Warranty term per country	
North America, UK, South Africa, Russia	1 year
Other countries	2 years

Contact information

IMPORTANT! This Angelcare® monitor is a personal care product. Please do not return this product to the store. If you have questions or need help, please call your distributor before returning this product.

We, at Angelcare®, stand behind all of our products. If you are not completely satisfied or have any questions, please contact your distributor before returning this product:

United States and Canada: Please contact us at: info@angelcarebaby.com

Other countries: Find your local distributor by visiting our website: angelcarebaby.com/distributors

TO LEARN MORE

To learn more, watch the **set-up videos** and other functionalities on our website.

<https://angelcare.zendesk.com/hc/>

www.angelcarebaby.com

Angelcare Canada Inc.

2000 McGill College Avenue, Suite 250
Montreal, Quebec, Canada, H3A 3H3

Imported and distributed in the UK by:

Angelcare Corporate UK Ltd.
Orchard Cottage, Back Radfords, Stone,
Staffordshire ST15 8GG, United Kingdom



RSCU EUROPE SAS.
38, rue René Boulanger,
75010 Paris France

IM327-UK-V05

